

SAFETY

2 0 2 3





I N D I C E

PAG. 10 PYRAMID



Art. **GDS1110002**
INDIANAPOLIS LOW
S1P



Art. **GDS3110001**
EVA LOW S3



Art. **GDS1110004**
NASCAR MID S3



Art. **GDS1110003**
NASCAR LOW S3

PAG. 18 BOA® FIT SYSTEM + MICHELIN OUTSOLES



Art. **GDS1090006**
TWISTER S1P



Art. **GDS1090008**
GRAVEL MID S3



Art. **GDS1090007**
GRAVEL LOW S3

PAG. 28 ARROW SOLES BY MICHELIN



Art. **GDS1090020**
KURUK MID S3



Art. **GDS1090019**
KURUK MID S3



Art. **GDS1090016**
SPEED LOW S3



Art. **GDS1090017**
KELE LOW S1P



Art. **GDS1090018**
KELE LOW S3

PAG. 38 MICHELIN TECHNICAL OUTSOLES



Art. **GDS1090022**
MONZA MID S3



Art. **GDS1090021**
MONZA LOW S3



Art. **GDS1090023**
MONZA 2.0 MID S1P



Art. **GDS1090015**
MONZA 2.0 LOW S1P



Art. **GDS1090009**
MONZA S1P



Art. **GDS3090010**
VALLELUNGA S1P



Art. **GDS1090014**
Art. **GDS1090013**
IMOLA MID S3



Art. **GDS1090012**
IMOLA LOW S3



PAG. 50
SAFE LINE
OUTDOOR



Art. **GDS2020001**
ALPINE ROUTE
WR S3



Art. **GDS1020002**
MOUNTAIN TECH
MID WR S3



Art. **GDS2020003**
WILD MOUNTAIN MID
WR S3



Art. **GDS2020004**
EXTREME MOUNTAIN
MID WR S3

PAG. 96
CYCLONE
SAFETY
LINE



Art. **GDS1050027**
G1 PRO LOW S1P



Art. **GDS1050019**
KAM LOW S1P



Art. **GDS1050025**
CRYSTAL LOW S3



Art. **GDS1050024**
CRYSTAL LOW S1P

PAG. 58
FULL
PROTECTION
LINE



Art. **GDS1100009**
GHOST MID S3



Art. **GDS1100010**
GHOST LOW S3



Art. **GDS1100007**
GOTHAM MID S3



Art. **GDS1100008**
GOTHAM LOW S3



Art. **GDS1100006**
FELIX MID S3



Art. **GDS1100003**
PISA MID S3



Art. **GDS1100004**
PISA LOW S3



Art. **GDS1100005**
JOCKER S1P

PAG. 104
SUMMER
LIGHT
LINE



Art. **GDS1050021**
CAIRO S1P

PAG. 72
HEAVY DUTY
LINE



Art. **GDS2030001**
RHINO MID S3



Art. **GDS2030002**
RHINO LOW S3



Art. **GDS1030003**
TRENTO MID WR
S3



Art. **GDS1030005**
MOTION MID S3



Art. **GDS2030003**
COSMOS WR S3



Art. **GDS2030008**
ALASKA WR S3 OC



Art. **GDS2030007**
ALASKA WR S3



Art. **GDS1030002**
RANGER WR S3

PAG. 108
LINEA
STANDARD
PLUS



Art. **GDS2070006**
3486 S3



Art. **GDS2070005**
3485 LOW S3



Art. **GDS1070001**
1562 S3



Art. **GDS1070002**
2445 S3



Art. **GDS2070004**
1664 S3

PAG. 86
HERO SAFETY
LINE



Art. **GDS1060011**
YUKON MID S3



Art. **GDS1060012**
YUKON LOW S3



Art. **GDS1060013**
YUKON LOW S1P



Art. **GDS1050017**
LINUX S1P



Art. **GDS1050009**
THOLOS A HERO S1P

PAG. 118
SOFT
COMPOSITE
LINE



Art. **GDS2080003**
GIOVE S3



Art. **GDS2080004**
MERCURIO S3



Art. **GDS1080001**
CALIPSO S1P



Art. **GDS2080005**
PLANET S3



Art. **GDS2080006**
RODEO S3



**ALUMINUM TOE CAP**

- + Protezione delle dita contro un urto di 200J
- + Toe protection with resistance of 200J
- + Protection des doigts contre un choc de 200J

**STEEL TOE CAP**

- + Protezione delle dita contro un urto di 200J
- + Toe protection with resistance of 200J
- + Protection des doigts contre un choc de 200J

**COMPOSITE TOE CAP**

- + Protezione delle dita contro un urto di 200J maggior leggerezza
- + Toe protection with resistance of 200J more lightness
- + Protection des doigts contre un choc de 200J plus grand légèreté

**GLASS FIBER TOE CAP**

- + Protezione delle dita contro un urto di 200J
- + Toe protection with resistance of 200J
- + Protection des doigts contre un choc de 200J

**STEEL ANTI PERFORATION**

- + Lamina antiperforazione in acciaio (1100 N)
- + Steel midsole with resistance of 1100 N
- + Lame antiperforation en acier (1100 N)

**COMPOSITE ANTI PERFORATION**

- + Lamina antiperforazione in composito (1100 N) maggior leggerezza
- + Composite midsole with resistance of 1100 N more lightness
- + Lame antiperforation en composite (1100 N) plus grande légèreté

**GENUINE LEATHER**

- + Tomaia in pelle
- + Leather upper
- + Empeigne en cuir

**MICROFIBRE UPPER**

- + Tomaia in micro bra
- + Micro bre upper
- + Empeigne en micro bre

**WR WATER PROOF**

- + Calzatura impermeabile
- + Water-proof footwear
- + Chaussure imperméable

**S3 H2O RESISTANT**

- + Tomaia resistente all'acqua
- + Water-resistant upper
- + Empeigne résistante à l'eau

**SUMMER SHOES**

- + Calzatura con caratteristiche di traspirabilità per il periodo estivo
- + Very breathable footwear suitable for summer season
- + Chaussure ayant des caractéristiques de transpirabilité pour l'été

**WELDING PROTECTION**

- + Protezione contro le scintille da saldatura
- + Welding spark protection
- + Protection contre les étincelles de soudure

**MICHELIN SOLE**

- + Suola Michelin
- + Michelin Outsole
- + Semelle Michelin

**EASY STEP OUT**

- + Calzatura con gancio a rapido slamento
- + Footwear with an easy step-out hook
- + Chaussure qui se déchausse facilement

**VIBRAM SOLE**

- + Suola Vibram
- + Vibram outsole
- + Semelle Vibram

**U.E. ITALIAN DESIGN**

- + Calzature disegnate in Italia e prodotte all'interno della Comunità Europea
- + Footwear designed in Italy and produced in the European Community
- + Chaussures dessinées en Italie, produites dans la Communauté Européenne

**THERMO SYSTEM**

- + Isolamento dal calore del fondo della calzatura
- + Heat isolation of outsole tread pattern
- + Isolation de la chaleur du fond de la chaussure

**HEAT RESISTANT SOLE**

- + Calzatura con battistrada resistente a + 300° per contatto (1 minuto)
- + Footwear with tread pattern resistant at +300° (1 minute)
- + Chaussure avec semelle résistante à + 300° par contact (1 minute)

**HIGH SLIP-RESISTANT**

- + Calzatura con suola ad alta resistenza allo scivolamento
- + Footwear with slip-resistant outsole
- + Chaussure ayant une semelle hautement résistante au glissement

**OIL-ACID RESISTANT**

- + Calzatura con suola resistente agli oli/acidi
- + Footwear with a oil/acid resistant outsole
- + Chaussure avec semelle résistante aux huiles/acides

**ANTISTATIC**

- + Calzatura con proprietà antistatiche
- + Antistatic footwear
- + Chaussure ayant des propriétés antistatiques

**TOP LIGHTNESS**

- + Calzatura ultra leggera
- + Very light footwear
- + Chaussure ultra légère

**METAL FREE**

- + Calzatura senza parti metalliche
- + Metal free footwear
- + Chaussure sans parties métalliques

**ANTI TORSION**

- + Calzatura con tallonetta anti-torsione
- + Footwear with anti-torsion plastic shank
- + Chaussure avec talon anti-torsion

**REFLEX ACCESSORIES**

- + Tomaia con piping e/o accessori in re ex
- + Upper with piping and/or accessories in re ex
- + Empeigne avec passepoil ré exe

**BOA® FIT SYSTEM**

- + Boa Fit System
- + Boa Fit System
- + Boa Fit System

GUIDA ALLE NORMATIVE

Tutte le calzature del calzaturificio Garsport sono prodotte nel rispetto dei requisiti essenziali stabiliti dalla Direttiva 89/686/CEE del 21 Dicembre 1989 o al Regolamento UE 2016/425.

Le calzature possono essere conformi alla norma EN ISO 20345:2011, UNI EN ISO 20345:2012 che stabiliscono le specifiche delle calzature di sicurezza con resistenza all'urto del puntale a 200 J. Essa definisce i requisiti di base del prodotto e quelli supplementari.

Le calzature conformi a suddette norme definiscono anche le specifiche per calzature da lavoro EN ISO 20347:2012, UNI EN ISO 20347:2012 ad uso professionale.

I requisiti di base si possono così riassumere:

CLASSE I

+ SB – PB - OB
calzatura dotata dei requisiti di base

+ S1 – O1 come SB/PB/OB
integrati da zona chiusa del tallone, proprietà antistatiche, assorbimento di energia nella zona del tallone

+ S2 - O2 come S1/P1/O1
integrati da penetrazione e assorbimento di acqua

+ S3 – O3 come S2/P2/O2
integrati da resistenza alla perforazione e suole con rilievi

CLASSE II

+ S4 – O4
proprietà antistatiche, assorbimento di energia nella zona del tallone

+ S5 – O5 come S4/P4/O4
integrati da resistenza alla perforazione e suole con rilievi

GUIDE TO THE NORMS

All Garsport footwear are produced according to the EEC instructions 89/686 dated 21st December 1989 or Regulation UE 2016/425.

Our footwear can comply with EN ISO 20345:2011 or UNI EN ISO 20345:2012 norm that fix detailed lists of safety footwear with resistance of a steel toe cap at 200 J. It also fixes all the basic requirements of the products and the additional ones.

Shoes that comply with the above mentioned norms, also define the standards for safety footwear EN ISO 20347:2012, UNI EN ISO 20347:2012 for professional use.

The basic requirements can be summarized as follows:

CLASS I

+ SB – PB - OB
shoe with basic requirements

+ S1 – P1 – O1 like SB/PB/OB
like SB/PB/OB integrated by heel area closed, antistatic properties, energy absorption of heel region

+ S2 - P2 – O2 like S1/P1/O1
integrated by water penetration and absorption

+ S3 – P3 – O3 like S2/P2/O2
integrated by resistance to perforation and contoured sole

CLASS II

+ S4 – P4 – O4
antistatic properties, energy absorption of heel region

+ S5 – P5 – O5 like S4/P4/O4
integrated by resistance to perforation and contoured sole.

GUIDE AUX RÈGEMENTATIONS

Toutes les chaussures de sécurité produites par l'usine GARSPOINT sont fabriquées conformément aux exigences établies par la Directive 89/686/CEE du 21 Décembre 1989 ou au règlement UE 2016/425.

Les chaussures peuvent être conformes à la norme EN ISO 20345:2011, UNI EN ISO 20345:2012, ou au règlement UE 2016/425, qui établit les spécifications des chaussures de sécurité avec embout 200 J. Cette norme définit les caractéristiques obligatoires du produit et les exigences additionnelles.

Les chaussures conformes à ces normes sur-nommées, définissent aussi les spécifiques techniques pour les chaussures de travail à usage professionnel.

Les conditions de base peuvent être résumées de la façon suivante:

CLASSE I

+ SB – PB - OB
chaussures avec caractéristiques de base

+ S1 – P1 – O1 comme SB/PB/OB
plus talon fermé, propriétés antistatiques, absorption d'énergie au talon

+ S2 - P2 – O2 comme S1/P1/O1
plus imperméabilité

+ S3 – P3 – O3 comme S2/P2/O2
comme S2/P2/O2 plus semelle anti-perforation, semelle à crampons

CLASSE II

+ S4 – P4 – O4
propriétés antistatiques, absorption d'énergie au talon

+ S5 – P5 – O5 comme S4/P4/O4
plus semelle anti-perforation, semelle à crampons

**CERTIFICATO ENISO9001: 2015 N° 556697**

Il sistema di gestione della qualità Garsport è certificato da BSI.



A close-up photograph of a person's lower legs and feet. They are wearing black safety shoes with neon green accents and laces. The shoes have a thick, rugged sole with a red stripe along the bottom edge. The person is standing on a reddish-brown floor next to a large black tire of a red tractor. The tractor's body is visible in the background, showing some wear and tear. The text 'PYRAMID' is overlaid in large, white, bold, sans-serif capital letters, split across two lines by a thin white horizontal line.

P Y R A
M I D



La nuova suola Pyramid by Garsport è in gomma vulcanizzata con una zeppa in poliuretano a bassa densità (PULL 38), ed un rivestimento in film termoplastico compatto e progettato per resistere agli urti e alle abrasioni. Questa nuova tecnologia è stata pensata tenendo in considerazione le performance che una calzatura tecnica da lavoro deve avere, ed è per questo che è stato scelto il Poliestere, idoneo al settore antinfortunistico, in modo da fornire una struttura molto più solida rispetto al Polietere. Grazie ad una attenta formulazione e all'utilizzo di materie prime Premium, si è riusciti a raggiungere un peso specifico molto basso con delle caratteristiche di comfort, rebound e compression set ottimali per le calzature innovative dei prossimi decenni.



The new Pyramid sole by Garsport is a vulcanized rubber sole with a low density polyurethane midsole (PULL 38) and a compact thermoplastic film coating designed to resist impact and abrasion. This new technology has been conceived according to the technical features that a safety shoe must have. POLYESTER has been chosen, as its nature is in line with the accident prevention environment, and it provides much more solid structure than polyether. Thanks to a careful formulation and the use of Premium raw materials, it has been possible to achieve a very low specific weight with optimal comfort, rebound and compression set characteristics for an innovative next decades' footwear.



La nouvelle semelle Pyramide de Garsport est fabriquée à base de caoutchouc vulcanisé avec une semelle intermédiaire en polyuréthane basse densité (PULL 38) et un revêtement en film thermoplastique compact conçu pour résister aux chocs et à l'abrasion. Cette nouvelle technologie a été conçue en considérant les performances qu'une chaussure de haute technologie doit avoir pour être efficace. C'est la raison pour laquelle le « POLYESTHER » a été choisi, car sa nature est conforme à l'environnement de prévention des accidents, car il fournit une structure beaucoup plus solide. Grâce à une formulation soignée et à l'utilisation de matières premières « Premium », il a été possible d'atteindre un poids spécifique très faible avec un confort optimal, des caractéristiques d'amortissement des chocs et de compression pour une chaussure innovante sur les prochaines décennies.



Design antiscivolamento e fondo autopulente
Anti-slip design and self cleaning bottom
Semelle anti-dérapante et autonettoyante

Fondo in gomma vulcanizzata a compressione
Vulcanized compressed rubber outsole
Semelle en caoutchouc vulcanisé compressé



Lamina anti-perforazione in composito
Composite (textile) anti-perforation last
Lame anti-pérforation en composite



Intersuola in PU/poliestere a bassa densità rivestita di un film termoplastico compatto
Low density PU/polyester midsole, coated with a compact thermoplastic film protection.
Semelle PU/Polyester basse densité, revêtue d'un film thermoplastique compact

Tomaia S1p in mesh con tecnologia TPU HOT MELT
S1p mesh upper with TPU HOT MELT technology
Empeigne en mesh S1p, avec la technologie « TPU HOT MELT » (TPU fondu à une chaleur très élevée)



INDIANAPOLIS LOW S1P



Art. GDS1110002

UTILIZZO | END USE | UTILISATION

Officine, magazzini, logistica, trasporti, carpenteria, elettricisti, idraulici, edilizia

Mechanic industry, warehouse, logistics, transportation, carpentry, electricians, hydraulics, building industry

Ateliers, entrepôts, logistique, transport, menuiserie, électriciens, plombiers, bâtiment

COLORI | COLORS | COLORIS

Cod. 0003

Nero - Black - Noir

Cod. 0079

Giallo Fluo - Fluo Yellow - Jaune Fluo

TOMAIA | UPPER | EMPÊIGNE

Nylon / Hot Melt TPU
Nylon / Hot Melt TPU
Nylon / Hot Melt TPU

SUOLA | OUTSOLE | SEMELLE

PYRAMID -PU / Film Tpu / Fondo gomma

PYRAMID - PU / TPU Film midsole / Rubber outsole

PYRAMID -PU / TPU Film / Semelle caoutchouc

LAMINA ANTI PERFORAZIONE | MIDSOLE | LAMINE ANTI-PERFORATION

Composito
Composite
Composite

PUNTALE | TOE CAP | EMBOUT

Alluminio
Alluminum
Aluminium

TAGLIE | SIZE RANGE | POINTURES

Cod. 0003 36-47

Cod. 0079 36-47



EVA LOW S3 WOMAN



Art. GDS3110001

UTILIZZO | END USE | UTILISATION

Officine, magazzini, logistica, trasporti, carpenteria, elettricisti, idraulici, edilizia

Mechanic industry, warehouse, logistics, transportation, carpentry, electricians, hydraulics, building industry

Ateliers, entrepôts, logistique, transport, menuiserie, électriciens, plombiers, bâtiment

COLORI | COLORS | COLORIS

Cod. 2425

Nero/Gold - Black/Gold - Noir/Doré

TOMAIA | UPPER | EMPÊIGNE

Microfibra fiore / Crosta scamosciata
Full grain Microfiber / Suede leather
Plein Fleur Microfibre / Cuir velours

SUOLA | OUTSOLE | SEMELLE

PYRAMID -PU / Film Tpu / Fondo gomma

PYRAMID - PU / TPU Film midsole / Rubber outsole

PYRAMID -PU / TPU Film / Semelle caoutchouc

LAMINA ANTI PERFORAZIONE | MIDSOLE | LAMINE ANTI-PERFORATION

Composito
Composite
Composite

PUNTALE | TOE CAP | EMBOUT

Alluminio
Alluminum
Aluminium

TAGLIE | SIZE RANGE | POINTURES

Cod. 2425 36-42



NASCAR MID S3



Art. GDS1110004

UTILIZZO | END USE | UTILISATION

Officine, magazzini, logistica, trasporti, carpenteria, elettricisti, idraulici, edilizia
Mechanic industry, warehouse, logistics, transportation, carpentry, electricians, hydraulics, building industry

Ateliers, entrepôts, logistique, transport, menuiserie, électriciens, plombiers, bâtiment

COLORI | COLORS | COLORIS

Cod. 2002

Antracite/Arancio - Anthracite/Orange - Gris Foncé/Orange

TOMAIA | UPPER | EMPEIGNE

Microfibra Nubuk / Nylon
Nubuk Microfiber / Nylon
Nubuk Microfibre / Nylon

SUOLA | OUTSOLE | SEMELLE

PYRAMID -PU / Film Tpu / Fondo gomma

PYRAMID - PU / TPU Film midsole / Rubber outsole

PYRAMID -PU / TPU Film / Semelle caoutchouc

LAMINA ANTI PERFORAZIONE | MIDSOLE | LAMINE ANTI-PERFORATION

Composito
Composite
Composite

PUNTALE | TOE CAP | EMBOUT

Alluminio
Alluminium
Aluminium

TAGLIE | SIZE RANGE | POINTURES

Cod. 2002 36-47



NASCAR LOW S3



Art. GDS1110003

UTILIZZO | END USE | UTILISATION

Officine, magazzini, logistica, trasporti, carpenteria, elettricisti, idraulici, edilizia
Mechanic industry, warehouse, logistics, transportation, carpentry, electricians, hydraulics, building industry

Ateliers, entrepôts, logistique, transport, menuiserie, électriciens, plombiers, bâtiment

COLORI | COLORS | COLORIS

Cod. 2002

Antracite/Arancio - Anthracite/Orange - Gris Foncé/Orange

TOMAIA | UPPER | EMPEIGNE

Microfibra Nubuk / Nylon
Nubuk Microfiber / Nylon
Nubuk Microfibre / Nylon

SUOLA | OUTSOLE | SEMELLE

PYRAMID -PU / Film Tpu / Fondo gomma

PYRAMID - PU / TPU Film midsole / Rubber outsole

PYRAMID -PU / TPU Film / Semelle caoutchouc

LAMINA ANTI PERFORAZIONE | MIDSOLE | LAMINE ANTI-PERFORATION

Composito
Composite
Composite


PUNTALE | TOE CAP | EMBOUT

Alluminio
Alluminium
Aluminium

TAGLIE | SIZE RANGE | POINTURES

Cod. 2002 36-47



A close-up photograph of a person's hand adjusting a BOA dial on a dark-colored sneaker. The sneaker features orange accents on the laces and the side. The background is a blurred indoor setting with a grey wall and a wooden surface.

BOA[®] FIT SYSTEM +
MICHELIN
TECHNICAL
OUTSOLES LINE



Quando la performance e tecnicità raggiungono il massimo della loro categoria. Questa nuova linea di prodotti si caratterizza per il connubio tra Michelin Technical Outsoles® e BOA® Fit System, leader di mercato nel mondo della produzione di soles e sistemi di chiusura per calzature. Grazie al nuovo fondo Michelin OP-100 in Eva-Gomma, design e compound del battistrada offrono il massimo in termini di resistenza all'usura anche in condizioni di lavoro difficili, unite ad un elevato grip che ne ottimizza anche la sicurezza durante l'utilizzo. Il nuovo sistema BOA®, utilizzato dai maggiori leaders di mercato, di utilizzo semplice ed intuitivo, assicura fitting e performance, uniti al massimo della sicurezza, ed è apprezzato nel mercato proprio per le sue caratteristiche di:

- + Rapidità e facilità di utilizzo (apertura/chiusura, rapido sfilamento)
- + Ottimizzazione e personalizzazione del comfort
- + Resistenza, affidabilità, e durata delle varie componenti



When the performance and technicality reach the maximum of their category. This new product line is characterized by the combination of Michelin Technical Outsoles® and BOA® Fit System, the market leaders in the world of sole and shoe closure systems. Thanks to the new Michelin OP-100 in Eva-rubber, design and tread compound offer the maximum in terms of wear resistance even in difficult working conditions, combined with a high grip that also optimises safety during use. The new BOA® system, employed by leading market leaders, with a simple and intuitive use, ensures fitting and performance, combined with the utmost safety, and it is appreciated in the market for its characteristics:

- + *Rapidity and ease of use (opening/closing, fast sliding)*
- + *Optimisation and customization of comfort*
- + *Resistance, reliability, and durability of the various components*



Lorsque la performance et la technicité atteignent le maximum de leur catégorie. Cette nouvelle gamme de produits se caractérise par la combinaison des semelles techniques Michelin® et la technologie Boa®, leaders du marché dans le monde des semelles et des systèmes de fermeture pour chaussures. Grâce à la nouvelle semelle Michelin OP-100 en EVA-Caoutchouc, le design et la composition de la semelle extérieure offrent le maximum au niveau de résistance à l'usure, même dans des conditions de travail difficiles, combiné avec une adhérence élevée qui optimise également la sécurité pendant l'utilisation. Le nouveau système Boa®, utilisé par les leaders du marché, avec une utilisation simple et intuitive, assure le montage et la performance, combiné avec la plus grande sécurité, et il est apprécié sur le marché pour ses caractéristiques:

- + *rapidité et facilité d'utilisation (ouverture/fermeture, enlèvement rapide)*
- + *optimisation et personnalisation du confort*
- + *résistance, fiabilité et durabilité des différents composants*



Powered by Michelin Technical Outsoles



Sistema di chiusura BOA® Fit System specifico per calzature a taglio basso (M6) o mid (M-4), per una personalizzazione totale del fitting
BOA® Fit System closing system specific for low (M-6) and mid (M4) shoes cut, with optimal fitting customization

Système de laçage BOA® Fit System spécifique pour les chaussures basses (M-6) ou mid (M-4), pour une personnalisation totale du fitting

Design suola ispirato al battistrada CrossClimate, ad elevata aderenza
Outsole design inspired by CrossClimate tyres, with excellent grip
Design de la semelle extérieure inspiré au CrossClimate avec adhérence très élevée



Puntale in fibra di vetro
Glass fiber TOE CAP
Embout en fibre de verre

Nylon sublimato (per S1p) o pelle+nylon ad alta tenacità per il massimo della resistenza e durata del prodotto
Sublimated nylon (for S1p) or leather + high tenacity nylon for the maximum abrasion resistance and product durability
Nylon sublimé (pour les s1p) PU cuir / Nylon avec très bonne tenacité pour le maximum de la résistance et de durée du produit

Intersuola in EVA leggera
Lightweight EVA midsole
Semelle de propreté en EVA

Lamina anti-perforazione in composito
Composite (textile) anti-perforation last
Lame anti-perforation en composite





Rotella - Dial - Disque



Laccio - Lace - Lacet



Guide - Lace Guides - Guides Pour Lacets

ATTREZZATURE DA LAVORO

Il Sistema Boa® consente di regolare la calzatura per un comfort che rimane inalterato per tutto il giorno. Sia che si debba togliere le scarpe o agire rapidamente in una situazione pericolosa, Boa® permette di indossare e togliere le scarpe in modo rapido e semplice. Inoltre, il Sistema Boa® aiuta a ridurre le contaminazioni, perché resiste a tutto: ghiaccio, sporco o olio. I lacci Boa® sono costruiti per resistere in qualsiasi ambiente. Garantito.

VANTAGGI DI BOA® FIT SYSTEM

UN FIT SU CUI CONTARE.

Realizzato con materiali ultra-resistenti e ampiamente testati sul campo. Una volta impostato, il fit rimane inalterato - un comfort più duraturo, tutto il giorno.

MICRO-REGOLABILITÀ.

Fai delle micro-regolazioni per una chiusura scorrevole ed uniforme con un fit preciso - con una sola mano, sempre e ovunque.

FACILI DA APRIRE E DA CHIUDERE.

Indossare e togliere l'attrezzatura è un'operazione rapida e semplice, in qualsiasi condizione.

GARANTITO.

La rotella e il laccio del Sistema Boa® sono garantiti per l'intera durata del prodotto su cui sono integrati, sono costruiti per resistere in qualsiasi ambiente.

PIATTAFORME PRODOTTO

L-SERIES

Leggere, per calzature basse e prodotti di dimensioni simili che richiedono precisione.

M-SERIES

Poliedrica, dalla massima versatilità, per resistere a condizioni variabili.

LA GARANZIA BOA®

FIT FOR LIFE WITH BOA®

La rotella e il laccio del Sistema Boa® sono garantiti per l'intera durata del prodotto.

UTILITY

The Boa® System lets you dial in a secure fit for an enduring, all-day comfort that stays consistent and true. Whether removing your gear or acting quickly in a dangerous situation, Boa makes it easy to get your boots on and off. And by shedding ice, dirt, and oil, The Boa® System helps reduce contamination. Boa's laces are built to perform in any environment. Guaranteed.

THE BENEFITS OF BOA® FIT SYSTEM

A FIT YOU CAN TRUST.

Engineered with ultra-durable materials and extensively field tested. Once adjusted, the fit stays the same - a consistent comfort, all day long.

MICRO-ADJUSTABILITY.

Dial in the perfect fit with a smooth, uniform closure, even single-handed fine tuning anytime you need it.

EASY ON, EASY OFF.

Get your gear on and off quickly, no matter the conditions.

GUARANTEED.

The Boa® System dials and laces are guaranteed for the lifetime of the product on which they are integrated.

THE BOA® PLATFORMS

L-SERIES

Lightweight, low tension, for low-cut footwear and similarly sized products that demand precision.

M-SERIES (M2, M3, M4, ...)

Multifaceted, with maximum versatility to withstand variable conditions.

THE BOA® GUARANTEE

FIT FOR LIFE WITH BOA®

The Boa® System dials and laces are guaranteed for the lifetime of the product on which they are integrated.

USAGE PROFESSIONNEL

Le système Boa permet un chaussant confortable et fiable toute la journée. Pour enlever votre équipement ou pour réagir vite dans une situation dangereuse, Boa vous permet d'enlever et de remettre vos chaussures facilement. Le système Boa réduit le risque de contamination en repoussant l'eau, la boue et l'huile. Les lacets Boa sont conçus pour un fonctionnement performant dans n'importe quel environnement. C'est un système garanti.

LES AVANTAGES DE BOA® FIT SYSTEM

CONFIANCE À TOUTE ÉPREUVE.

Système fabriqué avec des matériaux ultra-résistants et testés longuement sur le terrain. Ajustement constant et confort longue durée.

MICRO-RÉGLAGE.

Un ajustement parfait, grâce à un serrage facile et uniforme, d'une seule main en toutes circonstances.

FACILE À METTRE ET À ENLEVER.

Enfiler et retirer votre équipement sera simple et rapide en toutes conditions.

GARANTI.

Le système Boa est garanti pour toute la durée de vie du produit sur lequel il est intégré.

PIÈCES DÉTACHÉES

L-SERIES

légère, pour chaussures basses et d'autres produits similaires qui demandent de la précision.

M-SERIES (M2, M3, M4, ...)

Conçue pour une large gamme de produits, la m-series augmente la tension des lacets, la rapidité de délassage et la résistance.

LA GARANTIE BOA®

FIT FOR LIFE WITH BOA®

Le système Boa est garanti pour toute la durée de vie du produit sur lequel il est intégré.

1



PUSH IN TO ENGAGE

2



TURN TO TIGHTEN

3



PULL UP FOR QUICK RELEASE



TWISTER S1P



Art. GDS1090006

UTILIZZO | END USE | UTILISATION

Officine, magazzini, logistica, trasporti, carpenteria, elettricisti, idraulici, edilizia

Mechanic industry, warehouse, logistics, transportation, carpentry, electricians, hydraulics, building industry

Ateliers, entrepôts, logistique, transport, menuiserie, électriciens, plombiers, bâtiment

COLORI | COLORS | COLORIS

Cod. 2083

Grigio/Giallo - Grey/Yellow - Gris/Jaune

TOMAIA | UPPER | EMPEIGNE

Nylon sublimato / Microfibra
Sublimated Nylon / Microfiber
Nylon sublimé / Microfibre

SUOLA | OUTSOLE | SEMELLE

Michelin Gomma HRO / EVA
Michelin Rubber HRO / EVA
Michelin Caoutchouc / EVA

LAMINA ANTI PERFORAZIONE | MIDSOLE | LAMINE ANTI-PERFORATION

Composito
Composite
Composite

PUNTALE | TOE CAP | EMBOUT

Fibra di vetro
Glass fiber
Fibre de Verre

TAGLIE | SIZE RANGE | POINTURES

Cod. 2083 38-47



GRAVEL MID S3



Art. GDS1090008

UTILIZZO | END USE | UTILISATION

Officine, magazzini, logistica, trasporti, carpenteria, elettricisti, idraulici, edilizia

Mechanic industry, warehouse, logistics, transportation, carpentry, electricians, hydraulics, building industry

Ateliers, entrepôts, logistique, transport, menuiserie, électriciens, plombiers, bâtiment

COLORI | COLORS | COLORIS

Cod. 2099

Nero/Arancio - Black/Orange - Noir/Orange

TOMAIA | UPPER | EMPEIGNE

Pelle Nubuk / Nylon / Supporto tallone TPU

Nubuk Leather / Nylon / TPU Heel support

Cuir de nubuk / Nylon / Support du talon en TPU

SUOLA | OUTSOLE | SEMELLE

Michelin Gomma HRO / EVA

Michelin Rubber HRO / EVA

Michelin Caoutchouc / EVA

LAMINA ANTI PERFORAZIONE | MIDSOLE | LAMINE ANTI-PERFORATION

Composito

Composite

Composite

PUNTALE | TOE CAP | EMBOUT

Fibra di vetro

Glass fiber

Fibre de Verre

TAGLIE | SIZE RANGE | POINTURES

Cod. 2099 38-47



GRAVEL LOW S3



Art. GDS1090007

UTILIZZO | END USE | UTILISATION

Officine, magazzini, logistica, trasporti, carpenteria, elettricisti, idraulici, edilizia

Mechanic industry, warehouse, logistics, transportation, carpentry, electricians, hydraulics, building industry

Ateliers, entrepôts, logistique, transport, menuiserie, électriciens, plombiers, bâtiment

COLORI | COLORS | COLORIS

Cod. 2099

Nero/Arancio - Black/Orange - Noir/Orange

TOMAIA | UPPER | EMPEIGNE

Pelle Nubuk / Nylon / Supporto tallone TPU

Nubuk Leather / Nylon / TPU Heel support

Cuir de nubuk / Nylon / Support du talon en TPU

SUOLA | OUTSOLE | SEMELLE

Michelin Gomma HRO / EVA

Michelin Rubber HRO / EVA

Michelin Caoutchouc / EVA

LAMINA ANTI PERFORAZIONE | MIDSOLE | LAMINE ANTI-PERFORATION

Composito

Composite

Composite

PUNTALE | TOE CAP | EMBOUT

Fibra di vetro

Glass fiber

Fibre de Verre

TAGLIE | SIZE RANGE | POINTURES

Cod. 2099 38-47







A R R O W
SOLES BY
MICHELIN

ARROW SOLES BY MICHELIN



 Nuova linea esclusiva presentata da Garsport per il 2022, che si caratterizza per il nuovo fondo Michelin Arrow, dal design accattivante, studiato anche per un grip ottimale anche in situazioni di lavoro in ambienti esterni e su terreni difficili. La nuova linea ARROW – Soles by Michelin è sviluppata con un'eccezionale ed esclusiva suola a tre densità iniettata direttamente su tomaia. Realizzata con la tecnologia PLUS2 (brevetto STEMMA Srl) e l'impiego del battistrada in gomma Michelin il nuovo prodotto è apprezzabile sia per il design accattivante che per le performances tecniche. Grazie infatti alla combinazione di 3 materiali a diverse densità, la suola garantisce elevata resistenza allo scivolamento, confort e assoluta stabilità. Vengono così enfatizzate:

- > La versatilità produttiva, che permette di ampliare la gamma di prodotti realizzabili mediante iniezione diretta con sempre nuove soluzioni tecniche di prodotto.
- > L'elevata efficienza, che consente di produrre calzature con suola a 3 densità mantenendo lo stesso ritmo produttivo di un tradizionale processo bi-densità.
- > L'assoluta flessibilità, che permette di combinare le tradizionali produzioni in bi-densità con quella dei nuovi modelli a 3-densità, senza dover modificare la configurazione dell'impianto.

 *The new Pyramid sole by Garsport is a vulcanized rubber sole with a low density polyurethane midsole (PULL 38) and a compact thermoplastic film coating designed to resist impact and abrasion. Garsport introduces a new exclusive line for 2022, which is characterized by the new Michelin Arrow bottom stock. Featuring a modern and appealing design, this new outsole has been developed to be especially suitable for outdoor work and to have an excellent grip even on the roughest ground. This new line Arrow – Soles powered by Michelin is endowed with a unique tri-density outsole injected directly on the upper. Made with PLUS2 technology by STEMMA Srl and equipped with Michelin's famous rubber tread, this new product combines an attractive design with top level technical performances. In fact, combining three different density materials this outsole ensures high slip resistance, great comfort and full steadiness. The following features are then enhanced:*

- > *Production versatility, widening the range of products made through direct injection, offering this way always new technical solutions.*
- > *High efficiency, manufacturing tri-density outsole footwear at the same rhythm of the usual bi-density process.*
- > *Full flexibility, combining the production of classic bi-density models with new tri-density ones, without changing the existing system configuration.*

 *Nouvelle ligne exclusive présentée par Garsport pour le 2022, qui se caractérise par le nouveau fond Michelin Arrow, avec un design attrayant, également conçu pour une adhérence optimale même dans des situations de travail à l'extérieur et sur des terrains difficiles. La nouvelle ligne ARROW - Soles by Michelin est développée avec une semelle tridimensionnelle exceptionnelle et exclusive injectée directement sur la tige. Fabriqué avec la technologie PLUS2 (brevet STEMMA Srl) et l'utilisation de la bande de roulement en caoutchouc Michelin, le nouveau produit est apprécié à la fois pour son design attrayant et pour ses performances techniques. Grâce à la combinaison de 3 matériaux de densités différentes, la semelle garantit une grande résistance au glissement, confort et une stabilité absolue. Les points suivants sont donc très importants :*

- > *La polyvalence de production, qui permet d'élargir la gamme de produits avec injection directe avec des solutions techniques toujours nouvelles*
- > *La haute efficacité, qui vous permet de produire des chaussures à semelle 3 densités tout en conservant le même rythme de production qu'un procédé bi-densité traditionnel*
- > *La flexibilité absolue, qui vous permet de combiner la production bi-densité traditionnelle avec celle des nouveaux modèles 3-densité, sans avoir à changer la configuration du système.*

ARROW MICHELIN SOLES



Suola con miscela Work Outdoor Compound, ad elevata resistenza allo scivolamento
Work Outdoor Compound outsole, with excellence slip resistance properties
Semelle en Work Outdoor Compound, avec des propriétés excellentes de résistance au glissement

Powered by Michelin Technical Outsoles
Powered by Michelin Technical Outsoles
Powered by Michelin Technical Outsoles



Design esclusivo del battistrada
Exclusive outsole design
Conception exclusive de la semelle extérieure

Fodera con Materiali leggeri e traspiranti
Lining made with lightweight and breathable materials
Doublure avec des matériaux légers et transpirants

Materiali tomaia leggeri e resistenti, con un look accattivante e sportivo
Upper done with lightweight and resistant materials, with aggressive and sporty look
Matériaux très légers et résistants, avec un look attractif et sportif



Lamina anti-perforazione in composito
Composite (textile) anti-perforation last
Lame anti-perforation en composite

Puntale composito
Composite
Composite



KURUK MID S3



Art. GDS1090020

UTILIZZO | END USE | UTILISATION

Officine, magazzini, logistica, trasporti, carpenteria, elettricisti, idraulici, edilizia
Mechanic industry, warehouse, logistics, transportation, carpentry, electricians, hydraulics, building industry

Ateliers, entrepôts, logistique, transport, menuiserie, électriciens, plombiers, bâtiment

COLORI | COLORS | COLORIS

Cod. 2015

Antracite/Royal - Anthracite/Royal - Anthracite/Royal

TOMAIA | UPPER | EMPEIGNE

Fiore ingrassato
Waxed leather
Cuir graissé

SUOLA | OUTSOLE | SEMELLE

Michelin Arrow Gomma HRO / Intersuola PU doppia densità
Michelin Arrow Rubber HRO / Midsole PU double density
Michelin Arrow Caoutchouc HRO / Semelle PU double densité

LAMINA ANTI PERFORAZIONE | MIDSOLE |

LAMINE ANTI-PERFORATION

Composito
Composite
Composite

PUNTALE | TOE CAP | EMBOUT

Composito
Composite
Composite

TAGLIE | SIZE RANGE | POINTURES

Cod. 2015 36-47



KURUK LOW S3



Art. GDS1090019

UTILIZZO | END USE | UTILISATION

Officine, magazzini, logistica, trasporti, carpenteria, elettricisti, idraulici, edilizia
Mechanic industry, warehouse, logistics, transportation, carpentry, electricians, hydraulics, building industry

Ateliers, entrepôts, logistique, transport, menuiserie, électriciens, plombiers, bâtiment

COLORI | COLORS | COLORIS

Cod. 2015

Antracite/Royal - Anthracite/Royal - Anthracite/Royal

TOMAIA | UPPER | EMPEIGNE

Fiore ingrassato
Waxed leather
Cuir graissé

SUOLA | OUTSOLE | SEMELLE

Michelin Arrow Gomma HRO / Intersuola PU doppia densità
Michelin Arrow Rubber HRO / Midsole PU double density
Michelin Arrow Caoutchouc HRO / Semelle PU double densité

LAMINA ANTI PERFORAZIONE | MIDSOLE |

LAMINE ANTI-PERFORATION

Composito
Composite
Composite

PUNTALE | TOE CAP | EMBOUT

Composito
Composite
Composite

TAGLIE | SIZE RANGE | POINTURES

Cod. 2015 36-47



SPEED LOW S3



Art. GDS1090016

UTILIZZO | END USE | UTILISATION

Officine, magazzini, logistica, trasporti, carpenteria, elettricisti, idraulici, edilizia

Mechanic industry, warehouse, logistics, transportation, carpentry, electricians, hydraulics, building industry

Ateliers, entrepôts, logistique, transport, menuiserie, électriciens, plombiers, bâtiment

COLORI | COLORS | COLORIS

Cod. 2005

Antracite/Grigio - Anthracite/Grey - Anthracite/Gris

Cod. 2091

Marrone/Arancio - Brown/Orange - Marron/Orange

TOMAIA | UPPER | EMPÊIGNE

Microfibra Nubuk
Nubuk Microfiber
Nubuk Microfibre

SUOLA | OUTSOLE | SEMELLE

Michelin Arrow Gomma HRO / Intersuola PU doppia densità
Michelin Arrow Rubber HRO / Midsole PU double density
Michelin Arrow Caoutchouc HRO / Semelle PU double densité

LAMINA ANTI PERFORAZIONE | MIDSOLE | LAMINE ANTI-PERFORATION

Composito
Composite
Composite

PUNTALE | TOE CAP | EMBOUT

Composito
Composite
Composite

TAGLIE | SIZE RANGE | POINTURES

Cod. 2005 36-47

Cod. 2091 36-47



KELE LOW S1P



Art. GDS1090017

UTILIZZO | END USE | UTILISATION

Officine, magazzini, logistica, trasporti, carpenteria, elettricisti, idraulici, edilizia

Mechanic industry, warehouse, logistics, transportation, carpentry, electricians, hydraulics, building industry

Ateliers, entrepôts, logistique, transport, menuiserie, électriciens, plombiers, bâtiment

COLORI | COLORS | COLORIS

Cod. 2099

Nero/Arancio - Black/Orange - Noir/Orange

Cod. 2006

Antracite/Lime - Anthracite/Lime - Anthracite/Citron Vert

TOMAIA | UPPER | EMPEIGNE

Crosta scamosciata / Nylon
Suede Leather / Nylon
Cuir velour / Nylon

SUOLA | OUTSOLE | SEMELLE

Michelin Arrow Gomma HRO /
Intersuola PU doppia densità
Michelin Arrow Rubber HRO /
Midsole PU double density
Michelin Arrow Caoutchouc HRO /
Semelle PU double densité

LAMINA ANTI PERFORAZIONE | MIDSOLE | LAMINE ANTI-PERFORATION

Composito
Composite
Composite

PUNTALE | TOE CAP | EMBOUT

Composito
Composite
Composite

TAGLIE | SIZE RANGE | POINTURES

Cod. 2099 36-47

Cod. 2006 36-47



KELE LOW S3



Art. GDS1090018

UTILIZZO | END USE | UTILISATION

Officine, magazzini, logistica, trasporti, carpenteria, elettricisti, idraulici, edilizia

Mechanic industry, warehouse, logistics, transportation, carpentry, electricians, hydraulics, building industry

Ateliers, entrepôts, logistique, transport, menuiserie, électriciens, plombiers, bâtiment

COLORI | COLORS | COLORIS

Cod. 0003

Nero - Black - Noir

TOMAIA | UPPER | EMPEIGNE

Pelle Nubuk
Nubuk Leather
Cuir de Nubuk

SUOLA | OUTSOLE | SEMELLE

Michelin Arrow Gomma HRO /
Intersuola PU doppia densità
Michelin Arrow Rubber HRO /
Midsole PU double density
Michelin Arrow Caoutchouc HRO /
Semelle PU double densité

LAMINA ANTI PERFORAZIONE | MIDSOLE | LAMINE ANTI-PERFORATION

Composito
Composite
Composite

PUNTALE | TOE CAP | EMBOUT

Composito
Composite
Composite

TAGLIE | SIZE RANGE | POINTURES

Cod. 0003 36-47





**MICHELIN
TECHNICAL
OUTSOLES**



Leggerezza, comfort, alte performance... Sono questi gli aspetti chiave che uniscono Garsport alle nuove soles tecniche a marchio MICHELIN®, nella creazione di una nuova linea di calzature di sicurezza. Il risultato è la nuova linea Garsport Heritage, powered by MICHELIN® Technical Soles, che presenta diversi modelli dal design esclusivo, con la combinazione di materiali tecnici, e certificati S1p ed S3 a seconda delle condizioni di impiego e delle esigenze del consumatore finale. Tutto basato sulla nuova suola MICHELIN® Heritage, sviluppata in esclusiva per Garsport, con un'intersuola in eva, che si contraddistingue per l'estrema leggerezza e per l'eccellente resistenza allo scivolamento, e che grazie alle proprietà di antistaticità, resistenza al calore (HRO) e agli olii/acidi, la rendono completa e valida per molteplici tipologie di utilizzo.



Lightweight, comfort, high performance... These are the key elements which combine Garsport and MICHELIN®-branded technical sole, with the unique development of this new safety footwear range. The result is the new Garsport Heritage line powered by MICHELIN® Technical Soles, which presents different styles created with an exclusive design, the combination of technical and high quality materials, and certified S1p and S3 depending on the use conditions and the needs of the final customer. All this is based on the brand new MICHELIN® Heritage outsole, developed exclusively for Garsport, with an eva midsole, which stands for the extreme lightness and the excellent slip resistance, and thanks to the anti-static compound, the oil/acid and heat (HRO) resistance, becomes a complete and valid solution for all the multiple conditions of use.



Légèreté, confort, haute performance ... Ce sont les principaux aspects qui unissent Garsport aux nouvelles semelles techniques MICHELIN®, dans la création d'une nouvelle ligne de chaussures de sécurité. Le résultat est une nouvelle ligne Garsport Heritage, powered by MICHELIN® Technical Soles, qui présente des différents modèles avec un design unique, avec la combinaison de matériaux techniques et certifiés S1P et S3 en fonction des conditions d'emploi et des besoins du consommateur final. Tout repose sur la nouvelle semelle MICHELIN® Heritage, développée exclusivement pour Garsport, avec semelle intermédiaire EVA, qui se caractérise par son extrême légèreté et une excellente résistance au glissement, et qui grâce à ses propriétés antistatiques, à la résistance à la chaleur (HRO) et aux huiles / acides, la rendent complète et valide pour plusieurs types d'utilisations.



Powered by Michelin Technical Outsoles



Design esclusivo del battistrada
Exclusive outsole design
Conception exclusive de la semelle extérieure

Suola con mescola Work Outdoor Compound, ad elevata resistenza allo scivolamento
Work Outdoor Compound outsole, with excellence slip resistance properties
Semelle en Work Outdoor Compound, avec des propriétés excellentes de résistance au glissement

Materiali tomaia leggeri e resistenti, con un look accattivante e sportivo
Upper done with lightweight and resistant materials, with aggressive and sporty look
Matériaux très légers et résistants, avec un look attractif et sportif



Puntale di protezione in alluminio
Alluminium toe cap
Embout en aluminium

Fodera con materiali leggeri e traspiranti
Lining made with lightweight and breathable materials
Doublure avec des matériaux légers et transpirants

Intersuola in EVA leggera
Lightweight EVA midsole
Semelle de propreté en EVA

Lamina anti-perforazione in composito
Composite (textile) anti-perforation last
Lame anti-pérforation en composite



MONZA MID S3



Art. GDS1090022

UTILIZZO | END USE | UTILISATION

Officine, magazzini, logistica, trasporti, carpenteria, elettricisti, idraulici, edilizia

Mechanic industry, warehouse, logistics, transportation, carpentry, electricians, hydraulics, building industry

Ateliers, entrepôts, logistique, transport, menuiserie, électriciens, plombiers, bâtiment

COLORI | COLORS | COLORIS

Cod. 2194

Antracite/Giallo - Anthracite/Yellow
Anthracite/Jaune

TOMAIA | UPPER | EMPEIGNE

Fiore ingrassato
Waxed leather
Cuir graissé

SUOLA | OUTSOLE | SEMELLE

Michelin Heritage EVA / Gomma HRO
Michelin Heritage EVA / HRO Rubber
Michelin Heritage EVA / HRO Caoutchouc

LAMINA ANTI PERFORAZIONE | MIDSOLE | LAMINE ANTI-PERFORATION

Composito
Composite

Composite

PUNTALE | TOE CAP | EMBOUT

Alluminio
Alluminum
Aluminium

TAGLIE | SIZE RANGE | POINTURES

Cod. 2194 38-47



MONZA LOW S3



Art. GDS1090021

UTILIZZO | END USE | UTILISATION

Officine, magazzini, logistica, trasporti, carpenteria, elettricisti, idraulici, edilizia

Mechanic industry, warehouse, logistics, transportation, carpentry, electricians, hydraulics, building industry

Ateliers, entrepôts, logistique, transport, menuiserie, électriciens, plombiers, bâtiment

COLORI | COLORS | COLORIS

Cod. 2194

Antracite/Giallo - Anthracite/Yellow
Anthracite/Jaune

TOMAIA | UPPER | EMPEIGNE

Fiore ingrassato
Waxed leather
Cuir graissé

SUOLA | OUTSOLE | SEMELLE

Michelin Heritage EVA / Gomma HRO
Michelin Heritage EVA / HRO Rubber
Michelin Heritage EVA / HRO Caoutchouc

LAMINA ANTI PERFORAZIONE | MIDSOLE | LAMINE ANTI-PERFORATION

Composito
Composite
Composite

PUNTALE | TOE CAP | EMBOUT

Alluminio
Alluminum
Aluminium

TAGLIE | SIZE RANGE | POINTURES

Cod. 2194 38-47



MONZA 2.0 MID S1P



Art. GDS1090023

UTILIZZO | END USE | UTILISATION

Officine, magazzini, logistica, trasporti, carpenteria, elettricisti, idraulici

Mechanic industry, warehouse, logistics, electricians, hydraulics, carpentry

Ateliers, entrepôts, logistique, transport, menuiserie, électriciens, plombiers

COLORI | COLORS | COLORIS

Cod. 2426

Navy/Rosso - Navy/Red - Navy Bleu/Rouge

TOMAIA | UPPER | EMPEIGNE

Crosta scamosciata / Nylon
Suede leather / Nylon
Cuir velour / Nylon

SUOLA | OUTSOLE | SEMELLE

Michelin Heritage EVA / Gomma HRO
Michelin Heritage EVA / HRO Rubber
Michelin Heritage EVA / HRO Caoutchouc

LAMINA ANTI PERFORAZIONE | MIDSOLE | LAMINE ANTI-PERFORATION

Composito
Composite
Composite

PUNTALE | TOE CAP | EMBOUT

Alluminio
Alluminium
Aluminium

TAGLIE | SIZE RANGE | POINTURES

Cod. 2426 38-47



MONZA 2.0 LOW S1P



Art. GDS1090015

UTILIZZO | END USE | UTILISATION

Officine, magazzini, logistica, trasporti, carpenteria, elettricisti, idraulici

Mechanic industry, warehouse, logistics, electricians, hydraulics, carpentry

Ateliers, entrepôts, logistique, transport, menuiserie, électriciens, plombiers

COLORI | COLORS | COLORIS

Cod. 2426

Navy/Rosso - Navy/Red - Navy Bleu/Rouge

TOMAIA | UPPER | EMPEIGNE

Crosta scamosciata / Nylon
Suede leather / Nylon
Cuir velour / Nylon

SUOLA | OUTSOLE | SEMELLE

Michelin Heritage EVA / Gomma HRO
Michelin Heritage EVA / HRO Rubber
Michelin Heritage EVA / HRO Caoutchouc

LAMINA ANTI PERFORAZIONE | MIDSOLE | LAMINE ANTI-PERFORATION

Composito
Composite
Composite

PUNTALE | TOE CAP | EMBOUT

Alluminio
Alluminium
Aluminium

TAGLIE | SIZE RANGE | POINTURES

Cod. 2426 38-47



MONZA S1P



Art. GDS1090009

UTILIZZO | END USE | UTILISATION

Officine, magazzini, logistica, trasporti, carpenteria, elettricisti, idraulici, edilizia

Mechanic industry, warehouse, logistics, transportation, carpentry, electricians, hydraulics, building industry

Ateliers, entrepôts, logistique, transport, menuiserie, électriciens, plombiers, bâtiment

COLORI | COLORS | COLORIS

Cod. 2147

Royal/Arancio - Royal Blue/Orange - Bleu Royal / Orange

Cod. 2171

Antracite/Royal - Anthracite/Royal - Gris Foncé/Bleu Royal

Cod. 3037

Grigio/Nero/Giallo - Grey/Black/Yellow - Gris /Noir/Jaune

Cod. 3089

Perla/Rosso/Verde - Pearl/Red/Green - Perle /Rouge/ Vert

TOMAIA | UPPER | EMPEIGNE

Crosta scamosciata / Nylon
Suede leather / Nylon
Cuir velour / Nylon

SUOLA | OUTSOLE | SEMELLE

Michelin Heritage EVA / Gomma HRO
Michelin Heritage EVA / HRO Rubber
Michelin Heritage EVA / HRO Caoutchouc

LAMINA ANTI PERFORAZIONE | MIDSOLE | LAMINE ANTI- PERFORATION

Composito
Composite
Composite

PUNTALE | TOE CAP | EMBOUT

Alluminio
Aluminium
Aluminium

TAGLIE | SIZE RANGE | POINTURES

Cod. 2147 36-47

Cod. 2171 38-47

Cod. 3037 38-47

Cod. 3089 38-47



VALLELUNGA S1P



GDS3090010 WOMAN

UTILIZZO | END USE | UTILISATION

Officine, magazzini, logistica, trasporti, carpenteria, elettricisti, idraulici, edilizia

Mechanic industry, warehouse, logistics, transportation, carpentry, electricians, hydraulics, building industry

Ateliers, entrepôts, logistique, transport, menuiserie, électriciens, plombiers, bâtiment

COLORI | COLORS | COLORIS

Cod. 2251 (Woman)

Azzurro/Rosso - Light Blue/Red - Bleu Ciel/Rouge

TOMAIA | UPPER | EMPEIGNE

Crosta scamosciata
Suede leather
Cuir velour

SUOLA | OUTSOLE | SEMELLE

Michelin Heritage EVA / Gomma HRO
Michelin Heritage EVA / HRO Rubber
Michelin Heritage EVA / HRO Caoutchouc

LAMINA ANTI PERFORAZIONE | MIDSOLE | LAMINE ANTI- PERFORATION

Composito
Composite
Composite

PUNTALE | TOE CAP | EMBOUT

Acciaio
Steel
Acier

TAGLIE | SIZE RANGE | POINTURES

36-42



IMOLA MID S3



Art. GDS1090013 & GDS1090014

UTILIZZO | END USE | UTILISATION

Officine, magazzini, logistica, trasporti, carpenteria, elettricisti, idraulici, edilizia

Mechanic industry, warehouse, logistics, transportation, carpentry, electricians, hydraulics, building industry

Ateliers, entrepôts, logistique, transport, menuiserie, électriciens, plombiers, bâtiment

COLORI | COLORS | COLORIS

Cod. 0003

Nero (Microfibra) - Black - Noir

Cod. 0102

Marrone (Dakar) - Brown - Marron

TOMAIA | UPPER | EMPEIGNE

Cod. 0003

Microfibra - Microfiber - Microfibre

Cod. 0102

Pelle - Leather - Cuir

SUOLA | OUTSOLE | SEMELLE

Michelin Heritage EVA / Gomma HRO

Michelin Heritage EVA / HRO Rubber

Michelin Heritage EVA / HRO Caoutchouc

LAMINA ANTI PERFORAZIONE | MIDSOLE | LAMINE ANTI-PERFORATION

Composito

Composite

Composite

PUNTALE | TOE CAP | EMBOUT

Alluminio

Alluminum

Aluminium

TAGLIE | SIZE RANGE | POINTURES

Cod. 0003 36-47

Cod. 0102 36-47



IMOLA LOW S3



Art. GDS1090012

UTILIZZO | END USE | UTILISATION

Officine, magazzini, logistica, trasporti, carpenteria, elettricisti, idraulici, edilizia

Mechanic industry, warehouse, logistics, transportation, carpentry, electricians, hydraulics, building industry

Ateliers, entrepôts, logistique, transport, menuiserie, électriciens, plombiers, bâtiment

COLORI | COLORS | COLORIS

Cod. 0003

Nero (Microfibra) - Black - Noir

TOMAIA | UPPER | EMPEIGNE

Microfibra

Microfiber

Microfibre

SUOLA | OUTSOLE | SEMELLE

Michelin Heritage EVA / Gomma HRO

Michelin Heritage EVA / HRO Rubber

Michelin Heritage EVA / HRO Caoutchouc

LAMINA ANTI PERFORAZIONE | MIDSOLE | LAMINE ANTI-PERFORATION

Composito

Composite

Composite

PUNTALE | TOE CAP | EMBOUT

Alluminio

Alluminum

Aluminium

TAGLIE | SIZE RANGE | POINTURES

Cod. 0003 36-47





S A F E
L I N E
O U T D O O R



Quando l'outdoor diventa sicuro. Questo è sicuramente lo slogan che più si addice a questa linea Safety. Queste calzature nascono come scarpe da alta montagna, estremamente tecniche, con fodera interna impermeabile e traspirante, suola Vibram con inserto posteriore per l'attacco del rampone semi-automatico, e sottopiede di montaggio in nylon rigido, ma sono state declinate anche come prodotti di sicurezza, grazie all'introduzione del puntale antischiacciamento in alluminio e della lamina anti-perforazione in composito.

Ideale per tutti gli operatori che operano in condizioni difficili e ad alta quota, e necessitano di un prodotto sicuro che rispetti gli standard richiesti, con tutte le caratteristiche normalmente richieste per il mondo della montagna.



When Outdoor becomes safe! This is the claim which fits better for the new Safety line. This new products born as mountaineer boots, extremely technical, lined with waterproof/breathable material, and cemented with Vibram outsole with back insert for the semi-automatic crampon attachment and a stiffer lasting board, but they have also been developed as safety products, thanks to the introduction of an aluminum toe cap, and a composite anti-perforation last.

This boot is the ideal solution for all the operators who work and deal every day with high altitudes and difficult mountain conditions, and need a safety product which respects the normative standards, with all the necessary key features normally required for mountaineering.



Quand l'Outdoor devient Sécurité! C'est le slogan choisi par Garsport pour décrire au mieux le nouveau ligne Safety. À partir des chaussures de haute montagne, réservées aux Alpinistes chevronnés, aux techniques les plus extrêmes, doublure interne imperméable et transpirante, semelle Vibram avec attache postérieure sémi-automatique pour les crampons, semelle intérieure de propreté en nylon rigide, innovation avec une coque à embout en aluminium et une semelle anti-perforation composite.

Le must pour les professionnels les plus avertis qui opèrent en haute montagne dans des conditions extrêmes et difficiles, qui ont besoin d'un produit respectant les standards exigés et toutes les caractéristiques en termes de sécurité et de réglementation.



Suola in gomma Vibram
Vibram rubber outsole
Semelle Vibram



Sistema di allacciatura tecnico derivante dalle calzature d'alta quota

Technical lacing system inspired by mountaineering boots

Système technique de laçage dérivant des modèles pour la haute montagne

Climbing Zone (per utilizzo del rampone)
Climbing Zone (for crampon use)
Climbing zone (pour l'emploi du crampon)

Materiali tomaia in crosta scamosciata e nylon ad alta tenacità

Suede and high tenacity nylon upper materials

Matériaux de l'empeigne en cuir velours et nylon à haute ténacité



Fascione di protezione in gomma
Rubber rand protection
Bande de protection en gomme

Puntale in alluminio
Alluminium toe cap
Embout en aluminium

Inserto in TPU per attacco rampone semiautomatico
TPU insert for semi-automatic crampon attachment
Attache crampon sémi automatique en TPU

Intersuola in microporosa
Microporous midsole
Semelle intermédiaire en microporeuse

Lamina anti-perforazione in composito
Composite (textile) anti-perforation last
Lame anti-perforation en composite



ALPINE ROUTE WR S3



Art. GDS2020001

UTILIZZO | END USE | UTILISATION

Lavori in montagna, lavori ad alta quota, edilizia pesante, marmisti, lavori in cava, settore boschivo, con utilizzo di rampone semi-automatico

Mountain works, high altitude activities, heavy building industry, marble industry, quarry works, forest industry, with possible use of semi-automatic crampon

Travaux de montagne, activités de haute altitude, industrie lourde, industrie du marbre, travaux de carrière, industrie forestière, avec utilisation possible de crampons semiautomatiques

COLORI | COLORS | COLORIS

Cod. 0077

Giallo - Yellow - Jaune

Cod. 0135

Rosso - Red - Rouge

Cod. 2180

Nero/Verde Fluo - Black/Green Fluo - Noir/Citron Vert

TOMAIA | UPPER | EMPEIGNE

Crosta scamosciata / Fascione in gomma Suede leather / Rubber rand protection Cuir de suède / Protection en caoutchouc

SUOLA | OUTSOLE | SEMELLE

Vibram Mulaz / Micro / Inserto per rampone semiautomatico

Vibram Mulaz / Micro / Semi automatic Crampon insert

Vibram Mulaz / Micro / Insert de crampon sémi-automatique

LAMINA ANTI PERFORAZIONE | MIDSOLE | LAMINE ANTI-PERFORATION

Composito - Composite - Composite

PUNTALE | TOE CAP | EMBOUT

Alluminio - Alluminium - Aluminium

TAGLIE | SIZE RANGE | POINTURES

Cod. 0077 36-48

Cod. 0135 36-48

Cod. 2180 38-47



MOUNTAIN TECH MID WR S3



Art. GDS1020002

UTILIZZO | END USE | UTILISATION

Lavori in montagna, lavori ad alta quota, edilizia pesante, marmisti, lavori in cava, settore boschivo, con utilizzo di rampone semi-automatico

Mountain works, high altitude activities, heavy building industry, marble industry, quarry works, forest industry, with possible use of semi-automatic crampon

Travaux de montagne, activités de haute altitude, industrie lourde, industrie du marbre, travaux de carrière, industrie forestière, avec utilisation possible de crampons semiautomatiques

COLORI | COLORS | COLORIS

Cod. 2002

Antracite/Arancio - Anthracite/Orange - Anthracite/Orange

TOMAIA | UPPER | EMPEIGNE

Crosta scamosciata / Fascione in gomma Suede leather / Rubber rand protection Cuir de suède / Protection en caoutchouc

SUOLA | OUTSOLE | SEMELLE

Vibram Pepe / PU bidensità Vibram Pepe / Double density PU Vibram Pepe / Double densité PU

LAMINA ANTI PERFORAZIONE | MIDSOLE | LAMINE ANTI-PERFORATION

Composito Composite Composite

PUNTALE | TOE CAP | EMBOUT

Alluminio Alluminium Aluminium

TAGLIE | SIZE RANGE | POINTURES

Cod. 2002 38-47



WILD MOUNTAIN MID WR S3



Art. GDS2020003

UTILIZZO | END USE | UTILISATION

Lavori in montagna, lavori ad alta quota, edilizia pesante, marmisti, lavori in cava, settore boschivo, con utilizzo di rampone semi-automatico

Mountain works, high altitude activities, heavy building industry, marble industry, quarry works, forest industry, with possible use of semi-automatic crampon

Travaux de montagne, activités de haute altitude, industrie lourde, industrie du marbre, travaux de carrière, industrie forestière, avec utilisation possible de crampons semiautomatiques

COLORI | COLORS | COLORIS

Cod. 2099

Nero/Arancio - Black/Orange - Noir/Orange

TOMAIA | UPPER | EMPEIGNE

Nylon alta tenacità / Fascione in gomma

High tenacity Nylon / Rubber rand protection

Nylon haute ténacité / Protection en caoutchouc

SUOLA | OUTSOLE | SEMELLE

Vibram Mulaz / Micro / Inserto per rampone semiautomatico

Vibram Mulaz / Micro / Semi automatic Crampon insert

Vibram Mulaz / Micro / Insert de crampon sémi-automatique

LAMINA ANTI PERFORAZIONE | MIDSOLE | LAMINE ANTI- PERFORATION

Composito
Composite
Composite

PUNTALE | TOE CAP | EMBOUT

Alluminio
Alluminum
Aluminium

TAGLIE | SIZE RANGE | POINTURES

Cod. 2099 38-47



EXTREME MOUNTAIN MID WR S3



Art. GDS2020004

UTILIZZO | END USE | UTILISATION

Lavori in montagna, lavori ad alta quota, edilizia pesante, marmisti, lavori in cava, settore boschivo, con utilizzo di rampone semi-automatico

Mountain works, high altitude activities, heavy building industry, marble industry, quarry works, forest industry, with possible use of semi-automatic crampon

Travaux de montagne, activités de haute altitude, industrie lourde, industrie du marbre, travaux de carrière, industrie forestière, avec utilisation possible de crampons semiautomatiques

COLORI | COLORS | COLORIS

Cod. 0102

Marrone - Brown - Marron

TOMAIA | UPPER | EMPEIGNE

Crosta Poliuretanic / Fascione in gomma
PU Leather / Rubber rand protection
PU Cuir / Protection en caoutchouc

SUOLA | OUTSOLE | SEMELLE

Vibram Mulaz / Micro / Inserto per rampone semiautomatico

Vibram Mulaz / Micro / Semi automatic Crampon insert

Vibram Mulaz / Micro / Insert de crampon sémi-automatique

LAMINA ANTI PERFORAZIONE | MIDSOLE | LAMINE ANTI- PERFORATION

Composito
Composite
Composite

PUNTALE | TOE CAP | EMBOUT

Alluminio
Alluminum
Aluminium

TAGLIE | SIZE RANGE | POINTURES

Cod. 0102 38-47





FULL
PROTECTION
LINE



Con la sua tecnologia brevettata, la nuovissima linea Full Protection by Garsport risolve definitivamente il problema del comfort e dell'usura della calzatura nella zona della punta, in particolar modo negli ambienti e condizioni di utilizzo dove lo sfregamento e l'usura dei materiali sono molto elevati.

Grazie alla particolare costruzione, il comfort e la flessibilità sono eccezionali: all'utilizzatore sembrerà di NON AVERE IL PUNTALE DI PROTEZIONE, potendo quindi beneficiare di una comodità paragonabile ad una calzatura da tempo libero.

Inoltre, la superficie di rivestimento in PU nella zona della punta, massimizza la durata della calzatura e la sua resistenza all'abrasione ed agli agenti esterni.



The brand new full protection line by Garsport, with its patented technology, focuses on comfort in the toe area, where materials are subjected to intensive contact and abrasion.

Thanks to its particular construction, comfort and shoe flexibility are simply exceptional: the end user will feel like WEARING A SHOE WITHOUT PROTECTION TOE CAP, taking the benefit of having the same comfort comparable to everyday freetime shoes.

Furthermore, the PU coating surface on the toe area, allows a better shoe durability, and an improved resistance to external agents and abrasion.



Avec sa technologie brevetée, la toute nouvelle ligne Full Protection de Garsport résout définitivement le problème du confort et de l'usure de la chaussure dans la zone des orteils, en particulier dans les environnements et conditions d'utilisation où le frottement et l'usure des matériaux est très élevée.

Grâce à sa particulière construction, le confort et la flexibilité sont exceptionnels: à l'utilisateur il semblera de n'avoir aucun embout, ce qui lui permettra de bénéficier d'un confort comparable à une chaussure pour le temps libre.

En plus, la surface de revêtement en PU dans la zone des orteils, maximise la durabilité de la chaussure et la résistance à l'abrasion et aux agents externes.



Battistrada in PU, antistatico, resistente ad olii ed acidi
PU outsole, antistatic and oil/acid resistant
Semelle extérieure en PU, antistatique, résistante aux huiles et aux acides



Protezione alla caviglia (per modelli Mid)
Heel protection for mid cut styles
Protection de la cheville (pour les modèles mid)

Puntale di protezione in acciaio
Steel toe cap protection
Embout en acier

Protezione esterna in PU
External PU toe protection
Protection externe en PU



Materiali in pelle o nylon sublimato (S1p)
resistenti, adatti a condizioni di lavoro pesanti
Leather or sublimated nylon (S1p) resistant
material for heavy work conditions
Cuir ou nylon sublimé (S1p) résistants, pour
conditions de travail difficiles

Lamina anti-perforazione in composito
Composite (textile) anti-perforation last
Lame anti-perforation en composite

Suola iniettata in PU bi-densità
PU double density injected outsole
Semelle en PU double densité



GHOST MID S3



Art. GDS1100009

UTILIZZO | END USE | UTILISATION

Officine, magazzini, logistica, trasporti, carpenteria, elettricisti, idraulici, edilizia
Mechanic industry, warehouse, logistics, transportation, carpentry, electricians, hydraulics, building industry

Ateliers, entrepôts, logistique, transport, menuiserie, électriciens, plombiers, bâtiment

COLORI | COLORS | COLORIS

Cod. 2099

Nero/Arancio - Black/Orange - Noir/Orange

TOMAIA | UPPER | EMPEIGNE

Microfibra Nubuk
Nubuk Microfiber
Nubuk Microfibre

SUOLA | OUTSOLE | SEMELLE

Full Protection PU / PU doppia densità iniettato

Full Protection PU / PU double density injected

Full Protection PU / PU double densité injectée

LAMINA ANTI PERFORAZIONE | MIDSOLE | LAMINE ANTI-PERFORATION

Composito
Composite
Composite

PUNTALE | TOE CAP | EMBOUT

Acciaio
Steel
Acier

TAGLIE | SIZE RANGE | POINTURES

Cod. 2099 38-47



GHOST LOW S3



Art. GDS1100010

UTILIZZO | END USE | UTILISATION

Officine, magazzini, logistica, trasporti, carpenteria, elettricisti, idraulici, edilizia
Mechanic industry, warehouse, logistics, transportation, carpentry, electricians, hydraulics, building industry

Ateliers, entrepôts, logistique, transport, menuiserie, électriciens, plombiers, bâtiment

COLORI | COLORS | COLORIS

Cod. 2099

Nero/Arancio - Black/Orange - Noir/Orange

TOMAIA | UPPER | EMPEIGNE

Microfibra Nubuk
Nubuk Microfiber
Nubuk Microfibre

SUOLA | OUTSOLE | SEMELLE

Full Protection PU / PU doppia densità iniettato

Full Protection PU / PU double density injected

Full Protection PU / PU double densité injectée

LAMINA ANTI PERFORAZIONE | MIDSOLE | LAMINE ANTI-PERFORATION

Composito
Composite
Composite

PUNTALE | TOE CAP | EMBOUT

Acciaio
Steel
Acier

TAGLIE | SIZE RANGE | POINTURES

Cod. 2099 38-47



GOTHAM MID S3



Art. GDS1100007

UTILIZZO | END USE | UTILISATION

Officine, magazzini, logistica, trasporti, carpenteria, elettricisti, idraulici, edilizia
Mechanic industry, warehouse, logistics, transportation, carpentry, electricians, hydraulics, building industry

Ateliers, entrepôts, logistique, transport, menuiserie, électriciens, plombiers, bâtiment

COLORI | COLORS | COLORIS

Cod. 2128

Nero/Royal - Black/Royal - Noir/Royal

TOMAIA | UPPER | EMPEIGNE

Microfibra tecnica
Technical Microfiber
Microfibre Technique

SUOLA | OUTSOLE | SEMELLE

Full Protection PU / PU doppia densità iniettato

Full Protection PU / PU double density injected

Full Protection PU / PU double densité injectée

LAMINA ANTI PERFORAZIONE | MIDSOLE | LAMINE ANTI-PERFORATION

Composito
Composite
Composite

PUNTALE | TOE CAP | EMBOUT

Acciaio
Steel
Acier

TAGLIE | SIZE RANGE | POINTURES

Cod. 2128 38-47



GOTHAM LOW S3



Art. GDS1100008

UTILIZZO | END USE | UTILISATION

Officine, magazzini, logistica, trasporti, carpenteria, elettricisti, idraulici, edilizia
Mechanic industry, warehouse, logistics, transportation, carpentry, electricians, hydraulics, building industry

Ateliers, entrepôts, logistique, transport, menuiserie, électriciens, plombiers, bâtiment

COLORI | COLORS | COLORIS

Cod. 2128

Nero/Royal - Black/Royal - Noir/Royal

TOMAIA | UPPER | EMPEIGNE

Microfibra tecnica
Technical Microfiber
Microfibre Technique

SUOLA | OUTSOLE | SEMELLE

Full Protection PU / PU doppia densità iniettato

Full Protection PU / PU double density injected

Full Protection PU / PU double densité injectée

LAMINA ANTI PERFORAZIONE | MIDSOLE | LAMINE ANTI-PERFORATION

Composito
Composite
Composite

PUNTALE | TOE CAP | EMBOUT

Acciaio
Steel
Acier

TAGLIE | SIZE RANGE | POINTURES

Cod. 2128 38-47



FELIX MID S3



Art. GDS1100006

UTILIZZO | END USE | UTILISATION

Officine, magazzini, logistica, trasporti, carpenteria, elettricisti, idraulici, edilizia

Mechanic industry, warehouse, logistics, transportation, carpentry, electricians, hydraulics, building industry

Ateliers, entrepôts, logistique, transport, menuiserie, électriciens, plombiers, bâtiment

COLORI | COLORS | COLORIS

Cod. 0003

Nero - Black - Noir

TOMAIA | UPPER | EMPEIGNE

Fiore stampa dollaro / Nylon
Full grain burton / Nylon
Cuir grainé burton / Nylon

SUOLA | OUTSOLE | SEMELLE

Full Protection PU / PU doppia densità
Full Protection PU / PU double density
Full Protection PU / PU double densité

LAMINA ANTI PERFORAZIONE | MIDSOLE | LAMINE ANTI-PERFORATION

Composito
Composite
Composite

PUNTALE | TOE CAP | EMBOUT

Acciaio
Steel
Acier

TAGLIE | SIZE RANGE | POINTURES

Cod. 0003 38-47



PISA MID S3



Art. GDS1100003

UTILIZZO | END USE | UTILISATION

Officine, magazzini, logistica, trasporti, carpenteria, elettricisti, idraulici, edilizia

Mechanic industry, warehouse, logistics, transportation, carpentry, electricians, hydraulics, building industry

Ateliers, entrepôts, logistique, transport, menuiserie, électriciens, plombiers, bâtiment

COLORI | COLORS | COLORIS

Cod. 2117

Nero/Grigio - Black/Grey - Noir/Gris

TOMAIA | UPPER | EMPEIGNE

Pelle pieno fiore
Full grain leather
Cuir pleine fleur

SUOLA | OUTSOLE | SEMELLE

Full Protection PU / PU doppia densità iniettato

Full Protection PU / PU double density injected

Full Protection PU / PU double densité injectée

LAMINA ANTI PERFORAZIONE | MIDSOLE | LAMINE ANTI-PERFORATION

Composito
Composite
Composite

PUNTALE | TOE CAP | EMBOUT

Acciaio
Steel
Acier

TAGLIE | SIZE RANGE | POINTURES

Cod. 2117 38-47



PISA LOW S3



Art. GDS1100004

UTILIZZO | END USE | UTILISATION

Officine, magazzini, logistica, trasporti, carpenteria, elettricisti, idraulici, edilizia

Mechanic industry, warehouse, logistics, transportation, carpentry, electricians, hydraulics, building industry

Ateliers, entrepôts, logistique, transport, menuiserie, électriciens, plombiers, bâtiment

COLORI | COLORS | COLORIS

Cod. 2117

Nero/Grigio - Black/Grey - Noir/Gris

TOMAIA | UPPER | EMPEIGNE

Pelle pieno fiore
Full grain leather
Cuir pleine fleur

SUOLA | OUTSOLE | SEMELLE

Full Protection PU / PU doppia densità iniettato

Full Protection PU / PU double density injected

Full Protection PU / PU double densité injectée

LAMINA ANTI PERFORAZIONE | MIDSOLE | LAMINE ANTI-PERFORATION

Composito
Composite
Composite

PUNTALE | TOE CAP | EMBOUT

Acciaio
Steel
Acier

TAGLIE | SIZE RANGE | POINTURES

Cod. 2117 38-47



JOCKER S1P



Art. GDS1100005

UTILIZZO | END USE | UTILISATION

Officine, magazzini, logistica, trasporti, carpenteria, elettricisti, idraulici, edilizia

Mechanic industry, warehouse, logistics, transportation, carpentry, electricians, hydraulics, building industry

Ateliers, entrepôts, logistique, transport, menuiserie, électriciens, plombiers, bâtiment

COLORI | COLORS | COLORIS

Cod. 2179

Nero/Giallo Fluo - Black/Yellow Fluo - Noir/Jaune Fluo

TOMAIA | UPPER | EMPEIGNE

Nylon Sublimato / Microfibra
Sublimated Nylon / Microfiber
Nylon Sublimé / Microfibre

SUOLA | OUTSOLE | SEMELLE

Full Protection PU / PU doppia densità
iniettato

Full Protection PU / PU double density
injected

Full Protection PU / PU double densité
injectée

LAMINA ANTI PERFORAZIONE | MIDSOLE | LAMINE ANTI-PERFORATION

Composito
Composite
Composite

PUNTALE | TOE CAP | EMBOUT

Acciaio
Steel
Acier

TAGLIE | SIZE RANGE | POINTURES

Cod. 2179 38-47





**HEAVY
DUTY
LINE**



Linea di calzature pensata per i lavori più duri, in ambienti particolarmente difficili ed in diverse condizioni atmosferiche, anche fredde. La struttura di questi prodotti è priva di eccessive cuciture, in modo da garantire il massimo del comfort e della durata delle tomaie. La linea Heavy Duty si compone in diversi modelli con speciali puntali in alluminio, acciaio e composito, e lamine anti-perforazione in composito. Le soles in gomma nitrile, resistono anche alle elevate temperature, ed offrono un elevato grado di aderenza anche sui fondi più difficili e scivolosi.



Safety footwear line developed for the toughest works, in particularly difficult environment and with different weather conditions, even if extreme cold. The structure of these products is made with very few stitchings, in order to ensure maximum comfort and upper durability. Heavy Duty Line is composed by several styles with different special TOE CAPS in alluminium, steel and composite, with composite anti-perforation lasts. The nitril rubber outsoles resist to the highest temperatures, and offer an optimal grip even on the most difficult and slippery surfaces.



Ligne de chaussure conçue pour les travaux les plus durs dans des environnements particulièrement difficiles et dans des différentes conditions météorologiques, même de froid intense. La structure de ces produits est dépourvue de surpiqûres de manière à assurer le maximum du confort et aussi la durée des tiges. La ligne Heavy Duty est composée de différents modèles avec des embouts spéciaux en aluminium, acier et composite et des lames anti-pérforation en composite. Les semelles en caoutchouc nitrile résistent aux plus hautes températures et offrent un coefficient d'adhérence très élevé aussi bien sur des superficies difficiles et glissantes.



(Art. RHINO, TRENTO)

Battistrada in gomma HRO, antistatico, resistente ad olii ed acidi

HRO rubber outsole, antistatic and oil/acid resistant

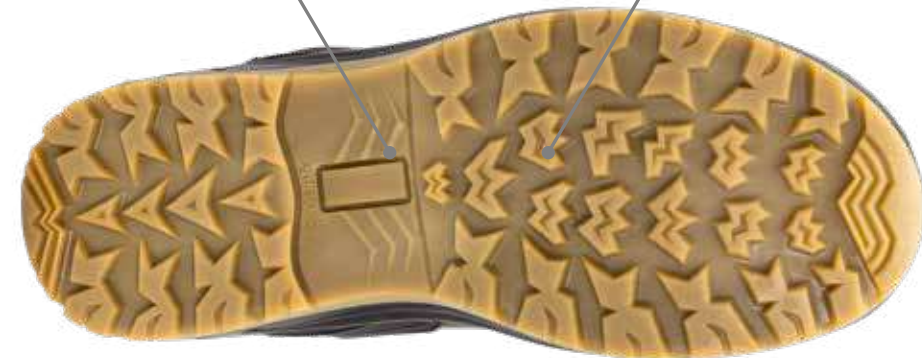
Semelle extérieure en gomme HRO, antistatique, résistante aux huiles et aux acides

(Art. MOTION)

Battistrada iniettata in PU, antistatico e resistente ad olii ed acidi

PU direct injected outsole, antistatic and oil/acid resistant

Semelle extérieure injectée en PU, antistatique, résistante aux huiles et aux acides



Supporto tallone, per una maggiore protezione e stabilità

Heel support, for better protection and foot stability

Support au talon, pour une protection et une stabilité majeures

Materiali tomaia resistenti per una maggiore durata della calzatura

High-resistance upper materials for long lasting use

Matériaux de l'empeigne très résistants pour une majeure durée de la chaussure



Intersuola iniettata in PU

Injected PU midsole

Semelle intermédiaire injectée en PU

Lamina anti-perforazione in composito
Composite (textile) antiperforation midsole
Lame anti-perforation en composite

Puntale di protezione in alluminio (Rhino, Trento) o acciaio (Motion, Cosmos)

Alluminium (Rhino and Trento) or Steel (Motion, Cosmos) toe cap

Embout en aluminium (Rhino et Trento) ou acier (Motion, Cosmos)



RHINO MID S3



Art. GDS2030001

UTILIZZO | END USE | UTILISATION

Edilizia pesante, foreste, carpenteria pesante, settore siderurgico, asfaltisti, settore agrario

Heavy building industry, forest industry, iron metallurgy, road works with tarmac, agriculture

Construction lourde, forêts, menuiserie lourde, sidérurgie, asphalte, secteur agricole

COLORI | COLORS | COLORIS

Cod. 0102

Marrone - Brown - Marron

Cod. 0003

Nero - Black - Noir

TOMAIA | UPPER | EMPEIGNE

Pelle Dakar / Nylon / Micro
Dakar grain leather / Nylon / Micro
Cuir Dakar / Nylon / Micro

SUOLA | OUTSOLE | SEMELLE

Iniettato PU / Gomma HRO
Injected PU / Rubber HRO
Injectée PU / HRO Caoutchouc

LAMINA ANTI PERFORAZIONE | MIDSOLE | LAMINE ANTI-PERFORATION

Composito
Composite
Composite

PUNTALE | TOE CAP | EMBOUT

Alluminio
Alluminum
Aluminium

TAGLIE | SIZE RANGE | POINTURES

Cod. 0102 38-47

Cod. 0003 38-47



RHINO LOW S3



Art. GDS2030002

UTILIZZO | END USE | UTILISATION

Edilizia pesante, foreste, carpenteria pesante, settore siderurgico, asfaltisti, settore agrario

Heavy building industry, forest industry, iron metallurgy, road works with tarmac, agriculture

Construction lourde, forêts, menuiserie lourde, sidérurgie, asphalte, secteur agricole

COLORI | COLORS | COLORIS

Cod. 0102

Marrone - Brown - Marron

Cod. 0003

Nero - Black - Noir

TOMAIA | UPPER | EMPEIGNE

Pelle Dakar / Nylon / Micro
Dakar grain leather / Nylon / Micro
Cuir Dakar / Nylon / Micro

SUOLA | OUTSOLE | SEMELLE

Iniettato PU / Gomma HRO
Injected PU / Rubber HRO
Injectée PU / HRO Caoutchouc

LAMINA ANTI PERFORAZIONE | MIDSOLE | LAMINE ANTI-PERFORATION

Composito
Composite
Composite

PUNTALE | TOE CAP | EMBOUT

Alluminio
Alluminum
Aluminium

TAGLIE | SIZE RANGE | POINTURES

Cod. 0102 38-47

Cod. 0003 38-47



TRENTO MID WR S3



Art. GDS1030003

UTILIZZO | END USE | UTILISATION

Edilizia pesante, foreste, carpenteria pesante, settore siderurgico, asfaltisti, settore agrario

Heavy building industry, forest industry, iron metallurgy, road works with tarmac, agriculture

Construction lourde, forêts, menuiserie lourde, sidérurgie, asphalte, secteur agricole

COLORI | COLORS | COLORIS

Cod. 0102

Marrone - Brown - Marron

TOMAIA | UPPER | EMPEIGNE

Pelle Dakar / Nylon
Dakar leather / Nylon
Cuir Dakar / Nylon

SUOLA | OUTSOLE | SEMELLE

Iniettato PU / Gomma HRO
Injected PU / Rubber HRO
Injectée PU / HRO Caoutchouc

LAMINA ANTI PERFORAZIONE | MIDSOLE | LAMINE ANTI-PERFORATION

Composito
Composite
Composite

PUNTALE | TOE CAP | EMBOUT

Alluminio
Alluminium
Aluminium

TAGLIE | SIZE RANGE | POINTURES

Cod. 0102 38-47



MOTION MID S3



Art. GDS1030005

UTILIZZO | END USE | UTILISATION

Edilizia pesante, foreste, carpenteria pesante, settore siderurgico, settore agrario

Heavy building industry, forest industry, iron metallurgy, agriculture

Construction lourde, forêts, menuiserie lourde, sidérurgie, secteur agricole

COLORI | COLORS | COLORIS

Cod. 2193

Marrone/Giallo - Brown/Yellow - Marron/Jaune

Cod. 0003

Nero - Black - Noir

TOMAIA | UPPER | EMPEIGNE

Pelle pieno fiore / Nylon
Full grain leather / Nylon
Cuir pleine fleur / Nylon

SUOLA | OUTSOLE | SEMELLE

Iniettato PU / PU doppia densità
Injected PU / PU double density
Double densité PU / PU injectée

LAMINA ANTI PERFORAZIONE | MIDSOLE | LAMINE ANTI-PERFORATION

Composito
Composite
Composite

PUNTALE | TOE CAP | EMBOUT

Acciaio
Steel
Acier

TAGLIE | SIZE RANGE | POINTURES

Cod. 2193 38-47

Cod. 0003 38-47



COSMOS WR S3



Art. GDS2030003

UTILIZZO | END USE | UTILISATION

Edilizia pesante, foreste, carpenteria pesante, settore siderurgico, asfaltisti, settore agrario

Heavy building industry, forest industry, iron metallurgy, road works with tarmac, agriculture

Construction lourde, forêts, menuiserie lourde, sidérurgie, asphalte, secteur agricole

COLORI | COLORS | COLORIS

Cod. 0102

Marrone - Brown - Marron

TOMAIA | UPPER | EMPEIGNE

Pelle Dakar / Nylon
Dakar leather / Nylon
Cuir Dakar / Nylon

SUOLA | OUTSOLE | SEMELLE

Iniettato PU / Gomma
Injected PU / Rubber
Injectée PU / Caoutchouc

LAMINA ANTI PERFORAZIONE | MIDSOLE | LAMINE ANTI-PERFORATION

Composito
Composite
Composite

PUNTALE | TOE CAP | EMBOUT

Acciaio
Steel
Acier

TAGLIE | SIZE RANGE | POINTURES

Cod. 0102 38-47



ALASKA WR S3 OC SYSTEM



Art. GDS2030008

UTILIZZO | END USE | UTILISATION

Ambienti freddi, autolavaggi, agraria, edilizia, lavori in presenza di ghiaccio

Cold and wet environments, car wash, agriculture and building industry, even in icy conditions

Environnements froids et humides, lave-auto, agriculture et industrie du bâtiment, même dans des conditions glaciales

COLORI | COLORS | COLORIS

Cod. 0003

Nero - Black - Noir

TOMAIA | UPPER | EMPÊIGNE

Pelle pieno fiore
Full grain leather
Cuir pleine fleur

SUOLA | OUTSOLE | SEMELLE

Gomma nitrile
Nitrile rubber
Caoutchouc nitrile

LAMINA ANTI PERFORAZIONE | MIDSOLE | LAMINE ANTI-PERFORATION

Composito
Composite
Composite

PUNTALE | TOE CAP | EMBOUT

Composito
Composite
Composite

TAGLIE | SIZE RANGE | POINTURES

Cod. 0003 39-47



SUOLA OC SYSTEM OC SYSTEM OUTSOLE SEMELLE OC SYSTEME

Lavori su ghiaccio, neve o fango? Nessun problema, Garsport ha realizzato la calzatura per te. Potrai lavorare in sicurezza e tranquillità con il nuovo sistema OC System. Applicato sotto alla suola, uno speciale sistema brevettato ti permetterà di applicarlo con una semplice rotazione. Potrai aprirlo e chiuderlo ogni volta che lo desideri e camminare su ogni tipo di superficie. Sistema già collaudato.

Do you work on ice, snow or mud? No problem! Garsport designed and produced the right footwear for you. You can work safely now with the new OC System applied on your outsole. This new special patented system will allow you to apply it with a simple twist. You can also open it and close it according to the type of surface you are walking on. This system has already been tested.

Travaillez-vous dans la glace, la neige ou la boue? Pas de problème! Garsport a conçu et produit la chaussure qu'il vous faut. Dorénavant vous pouvez travailler en toute sécurité avec les semelles intégrant le système OC. Ce nouveau système breveté vous permet de l'appliquer d'une simple rotation. Vous pouvez l'ouvrir ou le fermer selon la surface sur laquelle vous marchez. Ce système a déjà été testé.



ALASKA WR S3



Art. GDS2030007

UTILIZZO | END USE | UTILISATION

Ambienti freddi, autolavaggi, agraria, edilizia

Cold and wet environments, car wash, agriculture and building industry

Environnements froids et humides, lave-auto, agriculture et industrie du bâtiment

COLORI | COLORS | COLORIS

Cod. 0102

Marrone - Brown - Marron

TOMAIA | UPPER | EMPEIGNE

Pelle pieno fiore
Full grain leather
Cuir pleine fleur

SUOLA | OUTSOLE | SEMELLE

Gomma nitrile
Nitrile rubber
Caoutchouc nitrile

LAMINA ANTI PERFORAZIONE | MIDSOLE | LAMINE ANTI-PERFORATION

Composito
Composite
Composite

PUNTALE | TOE CAP | EMBOUT

Composito
Composite
Composite

TAGLIE | SIZE RANGE | POINTURES

Cod. 0102 39-47



RANGER WR S3



Art. GDS1030002

UTILIZZO | END USE | UTILISATION

Protezione civile, settore boschivo, edilizia

Civil defence, forest industry, building industry

Protection civile, industrie forestière, industrie du bâtiment

COLORI | COLORS | COLORIS

Cod. 0003

Nero - Black - Noir

TOMAIA | UPPER | EMPEIGNE

Pelle pieno fiore
Full grain leather
Cuir pleine fleur

SUOLA | OUTSOLE | SEMELLE

Gomma nitrile
Nitrile rubber
Caoutchouc nitrile

LAMINA ANTI PERFORAZIONE | MIDSOLE | LAMINE ANTI-PERFORATION

Composito
Composite
Composite

PUNTALE | TOE CAP | EMBOUT

Acciaio
Steel
Acier

TAGLIE | SIZE RANGE | POINTURES

Cod. 0003 37-48



HERO SAFETY LINE





Collezione ideata per dare massima leggerezza e comfort. Costruite con morbidi pellami, lamina e puntale in composito, sono ideali per lavori nel settore edile leggero e officine meccaniche.



Collection designed to give maximum lightness and comfort. Made with smooth leather, composite midsole and toe cap these shoes are suitable to light building and mechanical workers.



Cette collection est l'idéal pour donner le maximum de légèreté et confort au pied. Fabriquées avec des peaux très douces, lame anti-perforation et embout en composite, ces chaussures sont l'idéal pour les travaux dans les secteurs industriels bâtiments et de l'usine.



Battistrada iniettata in PU, antistatico, resistente ad olii ed acidi
PU injected outsole, antistatic and oil/acid resistant
Semelle extérieure injecté PU, antistatique et résistante aux huiles et acides



Materiali leggeri e traspiranti, ma resistenti
Lightweight and breathable, but resistant materials
Matériaux très légers et transpirants, mais très résistants

Puntale di protezione in composito
Composite toe cap protection
Embout en composite



Lamina anti-perforazione in composito
Composite (textile) anti-perforation last
Lame anti-perforation en composite

Suola HERO iniettata in poliuretano bi-densità
HERO PU / PU double density injected outsole
Semelle HERO PU / PU double densité



YUKON MID S3



Art. GDS1060011

UTILIZZO | END USE | UTILISATION

Officine, magazzini, logistica, trasporti, carpenteria, elettricisti, idraulici, edilizia
Mechanic industry, warehouse, logistics, transportation, carpentry, electricians, hydraulics, building industry
Ateliers, entrepôts, logistique, transport, menuiserie, électriciens, plombiers, bâtiment

COLORI | COLORS | COLORIS

Cod. 0003
Nero - Black - Noir

TOMAIA | UPPER | EMPEIGNE

Pelle pieno fiore / Nylon
Full grain leather / Nylon
Cuir pleine fleur / Nylon

SUOLA | OUTSOLE | SEMELLE

Iniettato PU / PU doppia densità
Injected PU / PU double density
Double densité PU / PU injectée

LAMINA ANTI PERFORAZIONE | MIDSOLE |

LAMINE ANTI-PERFORATION

Composito
Composite
Composite

PUNTALE | TOE CAP | EMBOUT

Composito
Composite
Composite

TAGLIE | SIZE RANGE | POINTURES

Cod. 0003 38-47



YUKON LOW S3



Art. GDS1060012

UTILIZZO | END USE | UTILISATION

Officine, magazzini, logistica, trasporti, carpenteria, elettricisti, idraulici, edilizia
Mechanic industry, warehouse, logistics, transportation, carpentry, electricians, hydraulics, building industry
Ateliers, entrepôts, logistique, transport, menuiserie, électriciens, plombiers, bâtiment

COLORI | COLORS | COLORIS

Cod. 0003
Nero - Black - Noir

TOMAIA | UPPER | EMPEIGNE

Pelle pieno fiore / Nylon
Full grain leather / Nylon
Cuir pleine fleur / Nylon

SUOLA | OUTSOLE | SEMELLE

Iniettato PU / PU doppia densità
Injected PU / PU double density
Double densité PU / PU injectée

LAMINA ANTI PERFORAZIONE | MIDSOLE |

LAMINE ANTI-PERFORATION

Composito
Composite
Composite

PUNTALE | TOE CAP | EMBOUT

Composito
Composite
Composite

TAGLIE | SIZE RANGE | POINTURES

Cod. 0003 38-47



YUKON LOW S1P



Art. GDS1060013

UTILIZZO | END USE | UTILISATION

Officine, magazzini, logistica, trasporti, carpenteria, elettricisti, idraulici, edilizia

Mechanic industry, warehouse, logistics, transportation, carpentry, electricians, hydraulics, building industry

Ateliers, entrepôts, logistique, transport, menuiserie, électriciens, plombiers, bâtiment

COLORI | COLORS | COLORIS

Cod. 0085

Grigio - Grey - Gris

TOMAIA | UPPER | EMPEIGNE

Crosta scamosciata / Nylon
Suede leather / Nylon
Cuir velour / Nylon

SUOLA | OUTSOLE | SEMELLE

Iniettato PU / PU doppia densità
Injected PU / PU double density
Double densité PU / PU injectée

LAMINA ANTI PERFORAZIONE | MIDSOLE |

LAMINE ANTI-PERFORATION

Composito
Composite
Composite

PUNTALE | TOE CAP | EMBOUT

Composito
Composite
Composite

TAGLIE | SIZE RANGE | POINTURES

Cod. 0085 38-47



LINUX S1P



Art. GDS1050017

UTILIZZO | END USE | UTILISATION

Officine, magazzini, logistica, trasporti, carpenteria, elettricisti, idraulici, edilizia

Mechanic industry, warehouse, logistics, transportation, carpentry, electricians, hydraulics, building industry

Ateliers, entrepôts, logistique, transport, menuiserie, électriciens, plombiers, bâtiment

COLORI | COLORS | COLORIS

Cod. 2147

Royal/Arancio - Royal Blue/Orange - Bleu Royal/Orange

Cod. 2179

Nero/Giallo Fluo - Black/Yellow Fluo - Noir/Jaune Fluo

TOMAIA | UPPER | EMPÊIGNE

Crosta scamosciata / Nylon
Suede leather / Nylon
Cuir velour / Nylon

SUOLA | OUTSOLE | SEMELLE

Iniettato PU / PU doppia densità
Injected PU / PU double density
Double densité PU / PU injectée

LAMINA ANTI PERFORAZIONE | MIDSOLE |

LAMINE ANTI-PERFORATION

Composito
Composite
Composite

PUNTALE | TOE CAP | EMBOUT

Composito
Composite
Composite

TAGLIE | SIZE RANGE | POINTURES

Cod. 2147 38-47

Cod. 2179 38-47



THOLOSA HERO S1P



Art. GDS1050009

UTILIZZO | END USE | UTILISATION

Officine, magazzini, logistica, trasporti, carpenteria, elettricisti, idraulici, edilizia

Mechanic industry, warehouse, logistics, transportation, carpentry, electricians, hydraulics, building industry

Ateliers, entrepôts, logistique, transport, menuiserie, électriciens, plombiers, bâtiment

COLORI | COLORS | COLORIS

Cod. 0008

Antracite - Anthracite - Anthracite

Cod. 0077

Giallo - Yellow - Jaune

TOMAIA | UPPER | EMPÊIGNE

Crosta scamosciata
Suede leather
Cuir velour

SUOLA | OUTSOLE | SEMELLE

Iniettato PU / PU doppia densità
Injected PU / PU double density
Double densité PU / PU injectée

LAMINA ANTI PERFORAZIONE | MIDSOLE |

LAMINE ANTI-PERFORATION

Composito
Composite
Composite

PUNTALE | TOE CAP | EMBOUT

Composito
Composite
Composite

TAGLIE | SIZE RANGE | POINTURES

Cod. 0008 38-47

Cod. 0077 38-47





**CYCLONE
SAFETY
LINE**



Linea studiata appositamente per una clientela giovane e dinamica che ama potersi muovere liberamente in tutte le situazioni anche non lavorative. Il design e i colori di tendenza sono sintetizzati in questa linea esclusiva in grado di soddisfare anche il pubblico più esigente. Leggerezza, comfort e una flessibilità unica nel suo genere sono il segreto di queste calzature.



This line is specifically designed for young people who love moving freely in all the situations even while not working. Trendy design and colours distinguish this exclusive range created to fully satisfy all workers' needs and especially the most demanding ones. Lightness, comfort and a unique flexibility are the secrets of these shoes.



Cette ligne est étudiée pour une clientèle jeune et dynamique qui aime pouvoir se déplacer librement dans toutes les situations même en dehors du travail. Le design et les coloris tendances sont résumés dans cette ligne exclusive en mesure de satisfaire également le public le plus exigeant. Légèreté, confort et une flexibilité unique en son genre sont le secret de ces chaussures.



Battistrada in PU monodensità art. Cyclone, con elevata resistenza allo scivolamento, nuovo design, antistatica e resistente ad olii ed acidi
 PU mono-density outsole art. Cyclone, with high slip resistant ratio, new design, antistatic and oil/acid resistant
 Semelle extérieure en PU monodensité art. Cyclone, avec haute résistance au glissement, nouveau design, antistatique et résistante aux huiles et aux acides



Materiali tomaia leggeri e resistenti
 Lightweight and resistant upper materials
 Matériaux de l'empeigne légers et résistants

Design tomaia leggero, giovane e dinamico
 Dynamic, young and aesthetically light upper design
 Design de l'empeigne dynamique, jeune et léger

Puntale di protezione in composito
 Composite toe cap protection
 Embout en composite



Suola in PU monodensità incollata
 Mono-density PU cemented outsole
 Semelle extérieure en PU mono-densité

Lamina anti-perforazione in composito
 Composite anti-perforation midsole
 Lame anti-perforation en composite



G1 PRO LOW S1P



Art. GDS1050027

UTILIZZO | END USE | UTILISATION

Officine, magazzini, logistica, trasporti, carpenteria, elettricisti, idraulici, settore aeroportuale

Mechanic industry, warehouse, logistics, transportation, carpentry, electricians, hydraulics, airports

Ateliers, entrepôts, logistique, transport, menuiserie, électriciens, plombiers, secteur ééroportuaire

COLORI | COLORS | COLORIS

Cod. 2112

Nero/Giallo - Black/Yellow - Noir/Jaune

Cod. 3214

Nero/Antracite/Turchese - Black/Anthracite/Turquoise - Noir/Gris foncé/Turquoise

TOMAIA | UPPER | EMPEIGNE

Microfibra / Nylon
Microfiber / Nylon
Microfibre / Nylon

SUOLA | OUTSOLE | SEMELLE

PU monodensità incollato
PU mono-density cemented
PU mono-densité collé

LAMINA ANTI PERFORAZIONE | MIDSOLE | LAMINE ANTI-PERFORATION

Composito
Composite
Composite

PUNTALE | TOE CAP | EMBOUT

Composito
Composite
Composite

TAGLIE | SIZE RANGE | POINTURES

Cod. 2112 36-47

Cod. 3214 36-47



KAM LOW S1P



Art. GDS1050019

UTILIZZO | END USE | UTILISATION

Officine, magazzini, logistica, trasporti, carpenteria, elettricisti, idraulici, edilizia

Mechanic industry, warehouse, logistics, transportation, carpentry, electricians, hydraulics, building industry

Ateliers, entrepôts, logistique, transport, menuiserie, électriciens, plombiers, bâtiment

COLORI | COLORS | COLORIS

Cod. 2260

Antracite/Arancio Fluo - Anthracite/Orange Fluo

Cod. 2180

Nero/Verde Fluo - Black/Green Fluo - Noir/Vert Fluo

TOMAIA | UPPER | EMPEIGNE

Crosta scamosciata / Nylon / Micro Suede leather / Nylon / Micro Cuir velour / Nylon / Micro

SUOLA | OUTSOLE | SEMELLE

PU monodensità incollato
PU mono-density cemented
PU mono-densité collé

LAMINA ANTI PERFORAZIONE | MIDSOLE | LAMINE ANTI-PERFORATION

Composito
Composite
Composite

PUNTALE | TOE CAP | EMBOUT

Composito
Composite
Composite

TAGLIE | SIZE RANGE | POINTURES

Cod. 2260 38-47

Cod. 2180 38-47



CRYSTAL LOW S3



Art. GDS1050025

UTILIZZO | END USE | UTILISATION

Officine, magazzini, logistica, trasporti, carpenteria, elettricisti, idraulici, settore aeroportuale

Mechanic industry, warehouse, logistics, transportation, carpentry, electricians, hydraulics, airports

Ateliers, entrepôts, logistique, transport, menuiserie, électriciens, plombiers, secteur ééroportuaire

COLORI | COLORS | COLORIS

Cod. 0003

Nero - Black - Noir

TOMAIA | UPPER | EMPEIGNE

Microfibra
Microfiber
Microfibre

SUOLA | OUTSOLE | SEMELLE

PU monodensità incollato
PU mono-density cemented
PU mono-densité collé

LAMINA ANTI PERFORAZIONE | MIDSOLE | LAMINE ANTI-PERFORATION

Composito
Composite
Composite

PUNTALE | TOE CAP | EMBOUT

Composito
Composite
Composite

TAGLIE | SIZE RANGE | POINTURES

Cod. 0003 36-47



CRYSTAL LOW S1P



Art. GDS1050024

UTILIZZO | END USE | UTILISATION

Officine, magazzini, logistica, trasporti, carpenteria, elettricisti, idraulici, settore aeroportuale

Mechanic industry, warehouse, logistics, transportation, carpentry, electricians, hydraulics, airports

Ateliers, entrepôts, logistique, transport, menuiserie, électriciens, plombiers, secteur ééroportuaire

COLORI | COLORS | COLORIS

Cod. 0085

Grigio - Grey - Gris

TOMAIA | UPPER | EMPEIGNE

Crosta scamosciata / Nylon
Suede leather / Nylon
Cuir velour / Nylon

SUOLA | OUTSOLE | SEMELLE

PU monodensità incollato
PU mono-density cemented
PU mono-densité collé

LAMINA ANTI PERFORAZIONE | MIDSOLE | LAMINE ANTI-PERFORATION

Composito
Composite
Composite

PUNTALE | TOE CAP | EMBOUT

Composito
Composite
Composite

TAGLIE | SIZE RANGE | POINTURES

Cod. 0085 36-47



A low-angle, close-up photograph of a person's legs and feet as they push a hand truck. The person is wearing dark grey or black cargo pants and dark sneakers with light-colored soles and yellow accents. The hand truck has a bright orange frame and two large black wheels. A large, brown cardboard box is loaded on the truck. The scene is set outdoors on a paved surface, with a white building and a dark wheel visible in the background. The lighting is bright, suggesting a sunny day.

**SUMMER
LIGHT
LINE**



Linea di prodotti ideale per un utilizzo prevalentemente estivo o indoor, in condizioni di caldo. Queste calzature, leggere e flessibili, si contraddistinguono per comfort e versatilità.

Dotate di puntale di protezione in composito e lamina anti-perforazione composito tessile, offrono l'opzione suola in PU bi-densità per il modello Cairo.



Range of product suitable for a mainly warm or indoor use, under summer weather conditions. These safety shoes, lightweight and flexible, represent the right product for the versatile users.

Structured with composite toe cap and composite textile anti-perforation last, offer two options of outsoles, with PU double density outsole for Cairo.



Ligne de produits pensée pour un usage estival ou indoor dans des conditions de chaleur. Ces modèles, légers et flexibles, se font reconnaître pour leur confort et leur versatilité.

Embout en composite et lame anti-pérforation composite textile, ces chaussures offrent deux options: semelle en PU double densité pour le modèle Cairo.



CAIRO S1P



Art. GDS1050021

UTILIZZO | END USE | UTILISATION

Officine, magazzini, logistica, trasporti, carpenteria, elettricisti, idraulici, pittori, agraria

Mechanic industry, warehouse, logistics, transportation, carpentry, electricians, hydraulics, painters, agriculture

Ateliers, entrepôts, logistique, transport, menuiserie, électriciens, plombiers, peintres, secteur agricol

COLORI | COLORS | COLORIS

Cod. 2117

Nero/Grigio - Black/Grey - Noir/Gris

TOMAIA | UPPER | EMPEIGNE

Microfibra / Nylon
Microfiber / Nylon
Microfibre / Nylon

SUOLA | OUTSOLE | SEMELLE

PU bidensità
Double density PU
Double densité PU

LAMINA ANTI PERFORAZIONE | MIDSOLE | LAMINE ANTI-PERFORATION

Composito
Composite
Composite

PUNTALE | TOE CAP | EMBOUT

Composito
Composite
Composite

TAGLIE | SIZE RANGE | POINTURES

Cod. 2117 38-47





LINEA
STANDARD
PLUS



La linea Standard Plus è robusta ed aggressiva, adatta a lavoratori che vogliono muoversi in estrema sicurezza. Scarpe solide e stabili che però non compromettono la leggerezza e il comfort.



Standard Plus line is a strong and aggressive line for workers who require extreme safety. Hard-wearing and stable shoes that do not compromise in terms of lightness and comfort.



La ligne standard plus est robuste et agressive, elle est adaptée aux travailleurs qui veulent se déplacer avec le maximum de sécurité. Des chaussures solides et stables qui ne compromettent pas la légèreté et le confort.



Battistrada iniettata in PU, antistatica e resistente ad olii ed acidi
 PU mono-density bottom, antistatic and oil/acid resistant
 Semelle extérieure injectée PU mono-densité, antistatique et résistante aux huiles et aux acides



Design robusto e resistente
 Tough and resistant design
 Design solide et résistant

Materiali resistenti e di qualità
 Resistant top quality materials
 Matériaux résistants de haute qualité



Puntale di protezione in acciaio
 (in composito per art. 1664)
 Steel toe cap (composite in case
 of art. 1664)
 Embout en acier (composite pour
 l'art. 1664)

Suola iniettata in poliuretano bi-densità
 PU / PU double density injected outsole
 Semelle injecté PU double densité

Lamina anti-perforazione in composito
 Composite (textile) anti-perforation last
 Lame anti-perforation en composite



3486 MID S3



Art. GDS2070006

UTILIZZO | END USE | UTILISATION

Officine, magazzini, logistica, trasporti, carpenteria, elettricisti, idraulici, edilizia

Mechanic industry, warehouse, logistics, transportation, carpentry, electricians, hydraulics, building industry

Ateliers, entrepôts, logistique, transport, menuiserie, électriciens, plombiers, industrie du bâtiment

COLORI | COLORS | COLORIS

Cod. 0102

Marrone - Brown - Marron

TOMAIA | UPPER | EMPEIGNE

Pelle pieno fiore / Nylon
Full grain leather / Nylon
Cuir pleine fleur / Nylon

SUOLA | OUTSOLE | SEMELLE

Iniettato PU / PU doppia densità
Injected PU / PU double density
Double densité PU / PU injectée

LAMINA ANTI PERFORAZIONE | MIDSOLE |

LAMINE ANTI-PERFORATION

Composito
Composite
Composite

PUNTALE | TOE CAP | EMBOUT

Acciaio
Steel
Acier

TAGLIE | SIZE RANGE | POINTURES

Cod. 0102 38-48



3485 LOW S3



Art. GDS2070005

UTILIZZO | END USE | UTILISATION

Officine, magazzini, logistica, trasporti, carpenteria, elettricisti, idraulici, edilizia

Mechanic industry, warehouse, logistics, transportation, carpentry, electricians, hydraulics, building industry

Ateliers, entrepôts, logistique, transport, menuiserie, électriciens, plombiers, industrie du bâtiment

COLORI | COLORS | COLORIS

Cod. 0102

Marrone - Brown - Marron

TOMAIA | UPPER | EMPEIGNE

Pelle pieno fiore / Nylon
Full grain leather / Nylon
Cuir pleine fleur / Nylon

SUOLA | OUTSOLE | SEMELLE

Iniettato PU / PU doppia densità
Injected PU / PU double density
Double densité PU / PU injectée

LAMINA ANTI PERFORAZIONE | MIDSOLE |

LAMINE ANTI-PERFORATION

Composito
Composite
Composite

PUNTALE | TOE CAP | EMBOUT

Acciaio
Steel
Acier

TAGLIE | SIZE RANGE | POINTURES

Cod. 0102 38-48



1562 S3



Art. GDS1070001

UTILIZZO | END USE | UTILISATION

Officine, magazzini, logistica, trasporti, carpenteria, elettricisti, idraulici, edilizia

Mechanic industry, warehouse, logistics, transportation, carpentry, electricians, hydraulics, building industry

Ateliers, entrepôts, logistique, transport, menuiserie, électriciens, plombiers, industrie du bâtiment

COLORI | COLORS | COLORIS

Cod. 0003

Nero - Black - Noir

TOMAIA | UPPER | EMPEIGNE

Fiore stampa dollaro
Full grain burton
Cuir grainé burton

SUOLA | OUTSOLE | SEMELLE

Iniettato PU / PU doppia densità
Injected PU / PU double density
Double densité PU / PU injectée

LAMINA ANTI PERFORAZIONE | MIDSOLE |

LAMINE ANTI-PERFORATION

Acciaio
Steel
Acier

PUNTALE | TOE CAP | EMBOUT

Acciaio
Steel
Acier

TAGLIE | SIZE RANGE | POINTURES

Cod. 0003 35-50



2445 S3



Art. GDS1070002

UTILIZZO | END USE | UTILISATION

Officine, magazzini, logistica, trasporti, carpenteria, elettricisti, idraulici, edilizia

Mechanic industry, warehouse, logistics, transportation, carpentry, electricians, hydraulics, building industry

Ateliers, entrepôts, logistique, transport, menuiserie, électriciens, plombiers, industrie du bâtiment

COLORI | COLORS | COLORIS

Cod. 0003

Nero - Black - Noir

TOMAIA | UPPER | EMPEIGNE

Fiore stampa dollaro
Full grain burton
Cuir grainé burton

SUOLA | OUTSOLE | SEMELLE

Iniettato PU / PU doppia densità
Injected PU / PU double density
Double densité PU / PU injectée

LAMINA ANTI PERFORAZIONE | MIDSOLE |

LAMINE ANTI-PERFORATION

Acciaio
Steel
Acier

PUNTALE | TOE CAP | EMBOUT

Acciaio
Steel
Acier

TAGLIE | SIZE RANGE | POINTURES

Cod. 0003 36-48



1664 S3



Art. GDS2070004

UTILIZZO | END USE | UTILISATION

Speciale saldatori, magazzini, logistica, trasporti, carpenteria, elettricisti, idraulici, edilizia

Welders industry, warehouse, logistics, transportation, carpentry, electricians hydraulics, building industry

Industrie des soudeurs, logistique, électriciens, transport, menuiserie, hydraulique, industrie du bâtiment

COLORI | COLORS | COLORIS

Cod. 0003

Nero - Black - Noir

TOMAIA | UPPER | EMPEIGNE

Fiore stampa dollaro
Full grain burton
Cuir grainé burton

SUOLA | OUTSOLE | SEMELLE

Iniettato PU / PU doppia densità
Injected PU / PU double density
Double densité PU / PU injectée

LAMINA ANTI PERFORAZIONE | MIDSOLE | LAMINE ANTI-PERFORATION

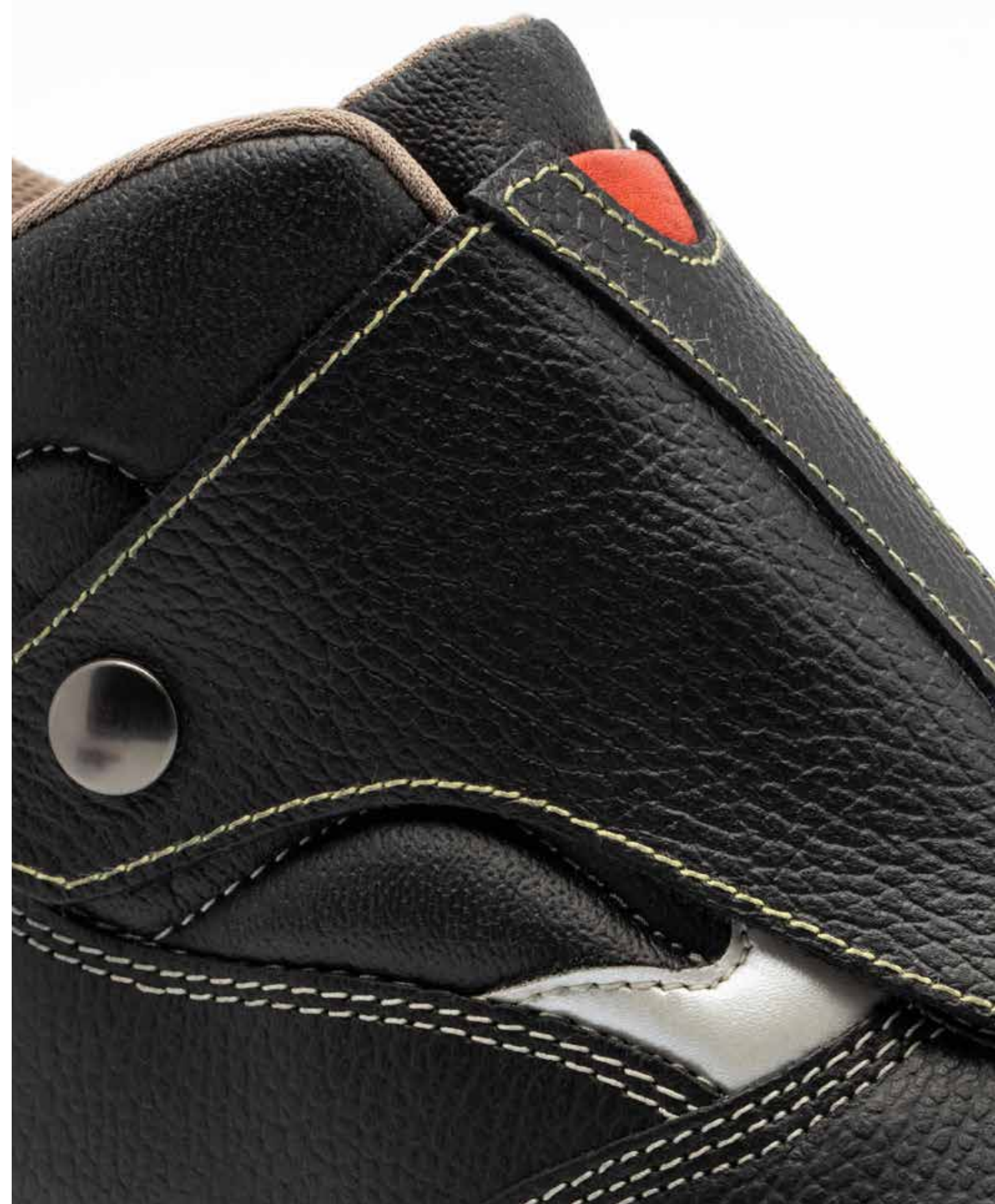
Composito
Composite
Composite

PUNTALE | TOE CAP | EMBOUT

Composito
Composite
Composite

TAGLIE | SIZE RANGE | POINTURES

Cod. 0003 38-48





**S O F T
C O M P O
S I T E
L I N E**



Collezione ideata per dare massima leggerezza e comfort. Costruite con morbidi pellami, lamina e puntale in composito, sono ideali per lavori nel settore edile e officine meccaniche.



Collection designed to give maximum lightness and comfort. Made with smooth leather, composite midsole and TOE CAP these shoes are suitable to building and mechanical workers.



Cette collection est l'idéal pour donner le maximum de légèreté et confort au pied. Fabriquées avec des peaux très douces, lame anti-perforation et embout en composite, ces chaussures sont l'idéal pour les travaux dans les secteurs industriels et de l'usine.



Battistrada iniettata in PU, antistatica e resistente ad olii ed acidi
PU mono-density bottom, antistatic and oil/acid resistant
Semelle extérieure injecté PU mono-densité, antistatique et résistante aux huiles et aux acides



Materiali tomaia morbidi, resistenti e di qualità
Soft, resistant and high quality upper materials
Matériaux de l'empeigne souples, résistants et de haute qualité



Puntale di protezione in composito
Composite toe cap protection
Embout en composite

Lamina anti-perforazione in composito
Composite (textile) anti-perforation last
Lame anti-perforation en composite

Suola iniettata in poliuretano bi-densità
PU / PU double density injected outsole
Semelle de propreté PU / PU double densité



MERCURIO S3



Art. GDS2080004

UTILIZZO | END USE | UTILISATION

Officine, magazzini, logistica, trasporti, carpenteria, elettricisti, idraulici, edilizia
Mechanic industry, warehouse, logistics, transportation, carpentry, electricians, hydraulics, building industry

Ateliers, entrepôts, logistique, transport, menuiserie, électriciens, plombiers, bâtiment

COLORI | COLORS | COLORIS

Cod. 2127
Nero/Rosso - Black/Red - Noir/Rouge

TOMAIA | UPPER | EMPEIGNE

Pelle pieno fiore
Full grain leather
Cuir pleine fleur

SUOLA | OUTSOLE | SEMELLE

Iniettato PU / PU doppia densità
Injected PU / PU double density
Double densité PU / PU injectée

LAMINA ANTI PERFORAZIONE | MIDSOLE | LAMINE ANTI-PERFORATION

Composito
Composite
Composite

PUNTALE | TOE CAP | EMBOUT

Composito
Composite
Composite

TAGLIE | SIZE RANGE | POINTURES

Cod. 2127 38-47



GIOVE S3



Art. GDS2080003

UTILIZZO | END USE | UTILISATION

Officine, magazzini, logistica, trasporti, carpenteria, elettricisti, idraulici, edilizia
Mechanic industry, warehouse, logistics, transportation, carpentry, electricians, hydraulics, building industry

Ateliers, entrepôts, logistique, transport, menuiserie, électriciens, plombiers, bâtiment

COLORI | COLORS | COLORIS

Cod. 2127
Nero/Rosso - Black/Red - Noir/Rouge

TOMAIA | UPPER | EMPEIGNE

Pelle pieno fiore
Full grain leather
Cuir pleine fleur

SUOLA | OUTSOLE | SEMELLE

Iniettato PU / PU doppia densità
Injected PU / PU double density
Double densité PU / PU injectée

LAMINA ANTI PERFORAZIONE | MIDSOLE | LAMINE ANTI-PERFORATION

Composito
Composite
Composite

PUNTALE | TOE CAP | EMBOUT

Composito
Composite
Composite

TAGLIE | SIZE RANGE | POINTURES

Cod. 2127 38-47



CALIPSO S1P



Art. GDS1080001

UTILIZZO | END USE | UTILISATION

Officine, magazzini, logistica, trasporti, carpenteria, elettricisti, idraulici, edilizia

Mechanic industry, warehouse, logistics, transportation, carpentry, electricians, hydraulics, building industry

Ateliers, entrepôts, logistique, transport, menuiserie, électriciens, plombiers, bâtiment

COLORI | COLORS | COLORIS

Cod. 0020

Beige - Beige - Beige

TOMAIA | UPPER | EMPEIGNE

Crosta scamosciata / Nylon
Suede / Nylon
Cuir velour / Nylon

SUOLA | OUTSOLE | SEMELLE

Iniettato PU / PU doppia densità
Injected PU / PU double density
Double densité PU / PU injectée

LAMINA ANTI PERFORAZIONE | MIDSOLE | LAMINE ANTI-PERFORATION

Composito
Composite
Composite

PUNTALE | TOE CAP | EMBOUT

Composito
Composite
Composite

TAGLIE | SIZE RANGE | POINTURES

Cod. 0020 36-47



PLANET S3



Art. GDS2080005

UTILIZZO | END USE | UTILISATION

Officine, magazzini, logistica, trasporti, carpenteria, elettricisti, idraulici, edilizia, settore aeroportuale

Mechanic industry, warehouse, logistics, transportation, carpentry, electricians, hydraulics, building industry, airports

Ateliers, entrepôts, logistique, transport, menuiserie, électriciens, plombiers, bâtiment, secteur aéroportuaire

COLORI | COLORS | COLORIS

Cod. 0003

Nero - Black - Noir

TOMAIA | UPPER | EMPEIGNE

Pelle pieno fiore / Nylon
Full grain leather / Nylon
Cuir pleine fleur / Nylon

SUOLA | OUTSOLE | SEMELLE

Iniettato PU / PU doppia densità
Injected PU / PU double density
Double densité PU / PU injectée

LAMINA ANTI PERFORAZIONE | MIDSOLE | LAMINE ANTI-PERFORATION

Composito
Composite
Composite

PUNTALE | TOE CAP | EMBOUT

Composito
Composite
Composite

TAGLIE | SIZE RANGE | POINTURES

Cod. 0003 38-47



RODEO S3



Art. GDS2080006

UTILIZZO | END USE | UTILISATION

Officine, magazzini, logistica, trasporti, carpenteria, elettricisti, idraulici, edilizia, settore aeroportuale

Mechanic industry, warehouse, logistics, transportation, carpentry, electricians, hydraulics, building industry, airports

Ateliers, entrepôts, logistique, transport, menuiserie, électriciens, plombiers, bâtiment, secteur aéroportuaire

COLORI | COLORS | COLORIS

Cod. 0003

Nero - Black - Noir

TOMAIA | UPPER | EMPEIGNE

Pelle pieno fiore / Nylon
Full grain leather / Nylon
Cuir pleine fleur / Nylon

SUOLA | OUTSOLE | SEMELLE

Iniettato PU / PU doppia densità
Injected PU / PU double density
Double densité PU / PU injectée

LAMINA ANTI PERFORAZIONE | MIDSOLE | LAMINE ANTI-PERFORATION

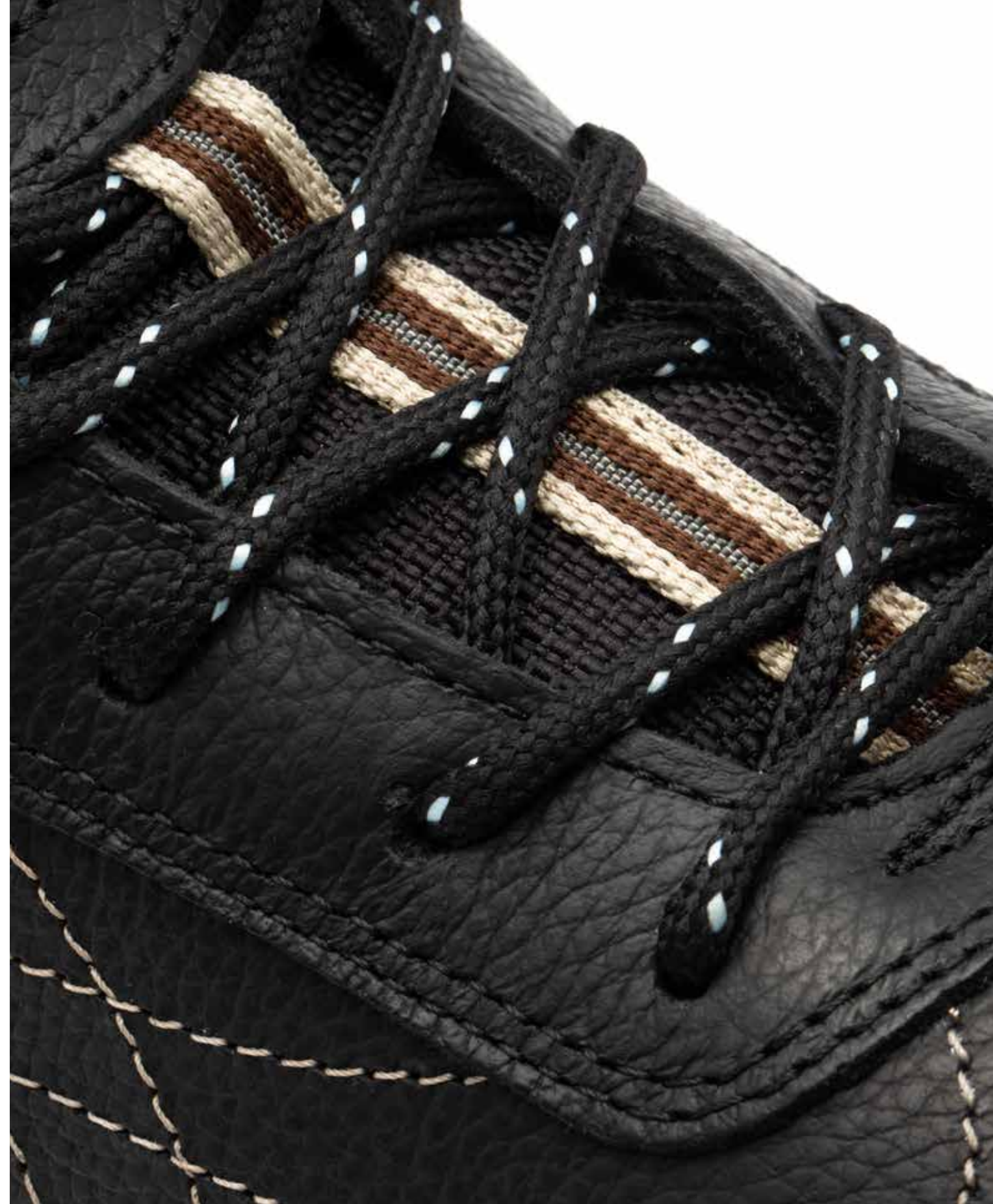
Composito
Composite
Composite

PUNTALE | TOE CAP | EMBOUT

Composito
Composite
Composite

TAGLIE | SIZE RANGE | POINTURES

Cod. 0003 38-47



ESPOSITORI - TOTEM - TABLE

GARSPORT TABLE DISPLAY



GDPOP00039

SEDIA GARSPORT



GDPOP00036



GDPOP00037
GARSPORT TOTEM
DISPLAY

CARPET



GDPOP00026



GDPOP00038
ESPOSITORE TEX FRAME

TAPPETO GARSPORT



GDPOP00035



GDPOP00040
GARSPORT CARTELLO
VETRINA SAFETY



SPRAY BOX 12 PZ



GDACC00019

Impermeabilizzante all'acqua per calzature
Water-based waterproofer for footwear

CREMA BOX 12 PZ



GDACC00020

Ingrasso impermeabilizzante in crema per calzature
Waterproofing fatliquor cream for footwear

STICKERS



10,5 x 5,5 cm



20 x 8 cm



30,5 x 16,5 cm

SHOPPERS



GDPOP00016



GDACC00001

GARSPORT ERGO INSOLE

 www.facebook.com/garsportshoes

 www.instagram.com/garsport_

 www.garsport.it

 info@garsport.it



Garsport SRL

Sede legale:

Via Piave, 15 - 31040
Volpago del Montello (TV)

Sede operativa:

Via Spineda, 12 - 31040
Volpago del Montello (TV)

T. (+39) 0423 870044

F. (+39) 0423 870010

info@garsport.it

www.garsport.it

Printed by



